

**Product Code:**

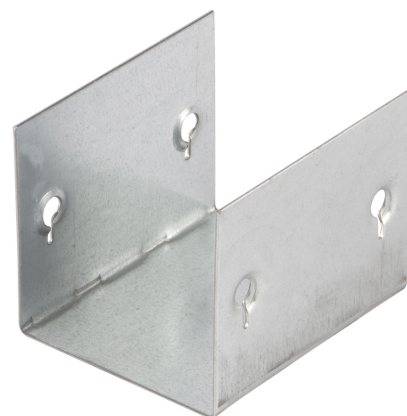
GSCU32

Product Range:Turnbuckle Accessories, Cable
Trunking**Issue Date:**

3/4/2025

Description:50mm x 50mm U Shaped Sleeve Coupler for Turnbuckle
Trunking (Sold in 1s)**Features:**

- Manufactured from continuously hot dipped zinc coated low carbon steel strip to BS EN 10346: 2015

**Technical:****Depth** 50mm**Width** 50mm**Material** Pre-Galvanised Steel (Zinc Coated)**Finish** Self Colour**Product Type** Coupler**Standard** BS EN 50085-2-1 2006; BS EN 10346

The approximate weights given are for pre-galvanised finish only, in kilograms (nominal) and subject to material thickness tolerance.