

**Product Code:**

GCA32

Product Range:Cable Trunking, Trunking
Accessories**Issue Date:**

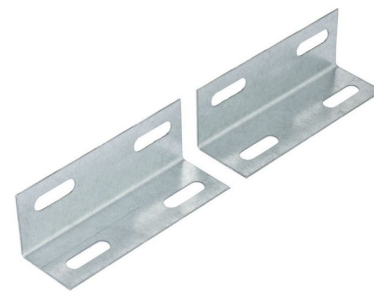
16/6/2026

Description:

75mm x 50mm Flange Coupler (Pair)

Features:

- Flange couplers are used for attaching and positioning steel trunking directly on a wall or enclosure.



Images used for illustrative purposes only

Technical:**Product Type** Flange Coupler**Width** 75mm**Height** 50mm**Material** Pre-Galvanised Steel (Zinc Coated)**Colour/Finish** Self Colour**Standards** BS EN 50085-2-1 2006; BS EN 10346:2015**Pack Quantity** Supplied in pairs

The approximate weights given are for pre-galvanised finish only, in kilograms (nominal) and subject to material thickness tolerance.

Tamlex | Harcourt | Halesfield 15 | Telford | Shropshire | TF7 4ER

T: 01952 586689 **E:** sales@tamlex.co.uk **W:** www.tamlex.co.uk