



Product Code:

GCA43

Product Range:

Cable Trunking, Trunking Accessories

Issue Date:

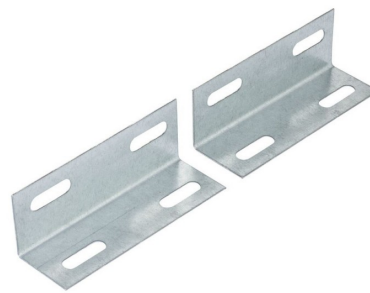
16/6/2026

Description:

100mm x 75mm Flange Coupler (Pair)

Features:

- Flange couplers are used for attaching and positioning steel trunking directly on a wall or enclosure.



Images used for illustrative purposes only

Technical:

Product Type Flange Coupler

Width 100mm

Height 100mm

Material Pre-Galvanised Steel (Zinc Coated)

Colour/Finish Self Colour

Standards BS EN 50085-2-1 2006; BS EN 10346:2015

The approximate weights given are for pre-galvanised finish only, in kilograms (nominal) and subject to material thickness tolerance.