

**Product Code:**

GCA63

Product Range:Cable Trunking, Trunking
Accessories**Issue Date:**

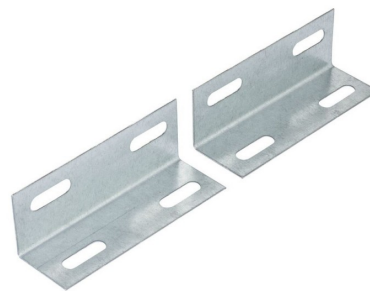
16/6/2026

Description:

150mm x 75mm Flange Coupler (Pair)

Features:

- Flange couplers are used for attaching and positioning steel trunking directly on a wall or enclosure.



Images used for illustrative purposes only

Technical:**Product Type** Flange Coupler**Width** 150mm**Height** 150mm**Material** Pre-Galvanised Steel (Zinc Coated)**Colour/Finish** Self Colour**Standards** BS EN 50085-2-1 2006; BS EN 10346:2015

The approximate weights given are for pre-galvanised finish only, in kilograms (nominal) and subject to material thickness tolerance.