

**Product Code:**

GCA66

**Product Range:**Cable Trunking, Trunking  
Accessories**Issue Date:**

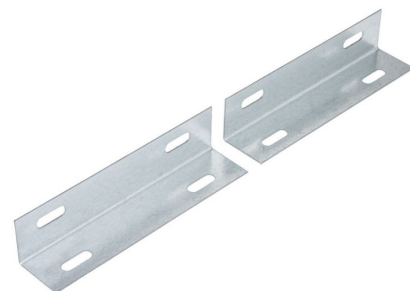
16/6/2026

**Description:**

150mm x 150mm Flange Coupler (Pair)

**Features:**

- Flange couplers are used for attaching and positioning steel trunking directly on a wall or enclosure.

**Technical:****Product Type** Flange Coupler**Width** 150mm**Height** 150mm**Material** Pre-Galvanised Steel (Zinc Coated)**Colour/Finish** Self Colour**Standards** BS EN 50085-2-1 2006; BS EN 10346:2015

The approximate weights given are for pre-galvanised finish only, in kilograms (nominal) and subject to material thickness tolerance.