

**Product Code:**

REL6TB

Product Range:Cable Trunking, Turnbuckle
Trunking**Issue Date:**

7/8/2025

Description:

150mm Turnbuckle Galvanised Steel Trunking Lid

Features:

- Spare Galvanised Steel Trunking Lid.
- Supplied with Turnbuckle fixings.

**Technical:****Product Type** Lid**Width** 150mm**Height** 10mm**Length** 3000mm**Material** Pre-Galvanised Steel (Zinc Coated)**Colour/Finish** Self Colour**Standards** BS EN 50085-2-1 2006; BS EN 10346:2015**Supplied With** Turnbuckle lid fixings**Important:**

Tamlex cable trunking is designed with strength and durability in mind, trunking must be installed so that the lid does not bear any cable weight. Incorrect installation may affect the integrity of the system and is not recommended., with the main body engineered to support the weight of installed cables. To ensure optimal performance and safety

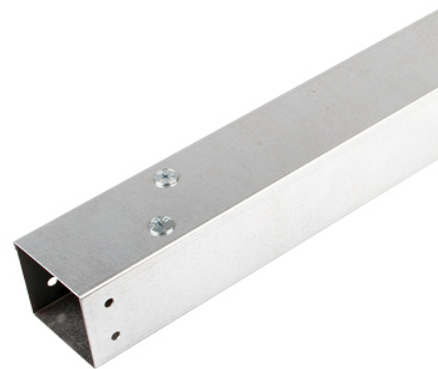
The approximate weights given are for pre-galvanised finish only, in kilograms (nominal) and subject to material thickness tolerance.

Deflection Test:

The data shown below was gathered in tests by Tamlex, and is given in good faith. It does not, however, constitute a warranty nor imply any guarantee.



Fig. 2. Deflection of a simple beam



Supports are spaced 2 metres apart measured from the centre of the supports. Trunking lids attached to the trunking using the relevant accessories.

| Part Codes | Kg/m | Initial Reading (mm) | Final Reading (mm) | Deflection (mm) | Deflection (%) |
|------------|-------|----------------------|--------------------|-----------------|----------------|
| TGRE22 | 2.50 | 219.5 | 220.5 | 1.0 | 0.050 |
| TGRE32 | 3.75 | 222.5 | 222.5 | 0.0 | 0.000 |
| TGRE33 | 5.63 | 196.5 | 198.0 | 1.5 | 0.075 |
| TGRE42 | 5.00 | 220.5 | 222.5 | 2.0 | 0.100 |
| TGRE43 | 7.50 | 196.5 | 198.0 | 1.5 | 0.075 |
| TGRE44 | 10.00 | 172.0 | 172.5 | 0.5 | 0.025 |
| TGRE62 | 7.50 | 222.5 | 223.5 | 1.0 | 0.050 |
| TGRE63 | 11.25 | 197.5 | 198.0 | 0.5 | 0.025 |
| TGRE64 | 15.00 | 174.5 | 172.5 | 2.0 | 0.100 |
| TGRE66 | 22.50 | 172.5 | 171.5 | 0.5 | 0.025 |

Cable Capacities: (maximum no. of cables 600/1000V PVC insulation)

| Trunking Size | 1.5 | 2.5 | 4 | 6 | 10 | 16 | 25 | 35 | 50 | 70 | 95 |
|---------------|------|-----|-----|-----|-----|-----|-----|-----|----|----|----|
| TGRE22 | 120 | 82 | 62 | 48 | 29 | 21 | 14 | 11 | 8 | 6 | 4 |
| TGRE32 | 180 | 123 | 93 | 73 | 44 | 32 | 21 | 16 | 12 | 9 | 6 |
| TGRE33 | 275 | 188 | 142 | 111 | 67 | 49 | 32 | 25 | 18 | 14 | 10 |
| TGRE42 | 243 | 165 | 125 | 98 | 59 | 43 | 28 | 22 | 16 | 12 | 9 |
| TGRE43 | 370 | 253 | 192 | 150 | 90 | 66 | 43 | 34 | 24 | 19 | 13 |
| TGRE44 | 494 | 337 | 256 | 200 | 120 | 88 | 57 | 45 | 33 | 25 | 18 |
| TGRE62 | 359 | 245 | 186 | 145 | 87 | 64 | 41 | 33 | 24 | 18 | 13 |
| TGRE63 | 551 | 376 | 285 | 223 | 134 | 99 | 64 | 50 | 36 | 28 | 20 |
| TGRE64 | 743 | 507 | 385 | 301 | 181 | 133 | 86 | 68 | 49 | 38 | 27 |
| TGRE66 | 1127 | 769 | 584 | 457 | 274 | 202 | 131 | 103 | 75 | 57 | 42 |