

**Product Code:**

FSIR/3

Product Range:

Flush Screed Trunking

Issue Date:

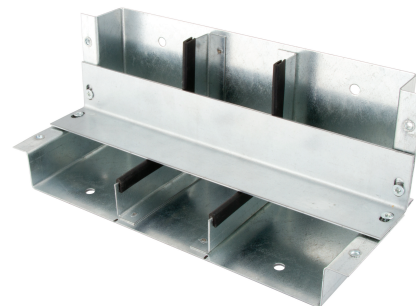
29/8/2025

Description:

3 Compartment Rising Bend for 225x25mm Flush Screed Trunking

Features:

- Riser Bend fitting is compatible with the Tamlex flush screed trunking system.
- 3 segregated compartments.
- Shallow 25mm deep trunking profile.
- Fillets have rubber gasket strip fitted to increase stability and reduce lid deflection.
- **Screed trunking must be installed on a solid foundation and completely supported by a screed ribbon.**

**Technical:**

Product Type Flush Screed Floor Trunking

Width 225mm

Weight 0.85 Kgs

Number of Compartments

Material Pre-Galvanised Steel (Zinc Coated)

Colour/Finish Self Colour

Standards BS EN 10346:2015

Important:

Screed trunking must be installed on a solid foundation and completely supported across its complete width by a screed ribbon.

Extra Information

The galvanised trunking lids and service boxes should be in position before the screed is poured to ensure the pressure of the screed does not distort the side walls of the trunking.

The approximate weights given are for pre-galvanised finish only, in kilograms (nominal) and subject to material thickness tolerance.

Tamlex | Harcourt | Halesfield 15 | Telford | Shropshire | TF7 4ER

T: 01952 586689 **E:** sales@tamlex.co.uk **W:** www.tamlex.co.uk