

**Product Code:**

FSJ/93

**Product Range:**

Flush Screed Trunking

**Issue Date:**

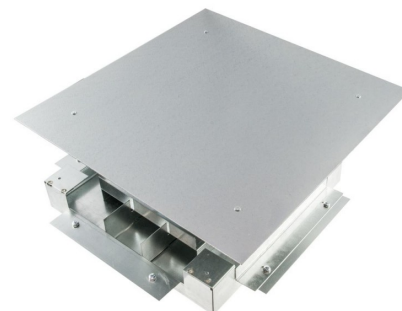
29/8/2025

**Description:**

3 Compartment Intersection for 225x25mm Flush Screed Trunking

**Features:**

- Intersection to be used as flat bend, tee and fourway.
- Intersections are 55mm deep to allow the maximum cable capacity throughout the system.
- Reinforced lid to allow foot traffic.
- Fillets have rubber gasket strip fitted to increase stability and reduce lid deflection.
- Intersections should be installed when the trunking is installed.
- **Screed trunking must be installed on a solid foundation and completely supported by a screed ribbon.**

**Technical:****Product Type** Flush Screed Floor Trunking**Width** 225mm**Weight** 4.48 Kgs**Number of Compartments****Material** Pre-Galvanised Steel (Zinc Coated)**Colour/Finish** Self Colour**Standards** BS EN 10346:2015**Important:**

Screed trunking must be installed on a solid foundation and completely supported across its complete width by a screed ribbon.

**Extra Information**

The galvanised trunking lids and service boxes should be in position before the screed is poured to ensure the pressure of the screed does not distort the side walls of the trunking.

The approximate weights given are for pre-galvanised finish only, in kilograms (nominal) and subject to material thickness tolerance.

Tamlex | Harcourt | Halesfield 15 | Telford | Shropshire | TF7 4ER

**T:** 01952 586689 **E:** sales@tamlex.co.uk **W:** www.tamlex.co.uk