

**Product Code:**

C3US

Product Range:Service Boxes, 3 Compartment
Plates**Issue Date:**

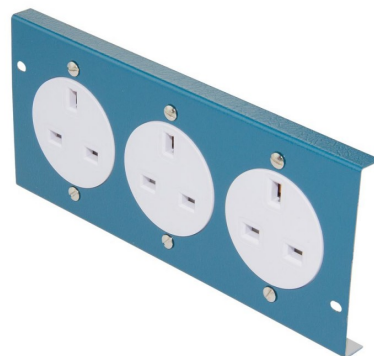
4/12/2025

Description:

3 x 1 Gang Unswitched Sockets into Plate

Features:

- Service plates fit neatly into Tamlex service boxes.
- Plates are manufactured in plastic coated steel (blue) with folded edges to give additional strength.
- A large range of service plates are available separately enabling multiple configurations to be accommodated.

**Technical:****Product Type** Floor Box Plate**Width** 85mm**Depth** 12mm**Length** 192mm**Weight** 0.22 Kgs**Number of Gangs** 3**Material** Plastisol Z275 Steel**Colour/Finish** Blue**Extra Information**

only flush or panel-mounted sockets (C2GS) should be used.

The approximate weights given are for pre-galvanised finish only, in kilograms (nominal) and subject to material thickness tolerance.

