

**Product Code:**

PMF100-FEC45

Product Range:Cable Tray, Pre Galvanised,
Medium Duty Accessories**Issue Date:**

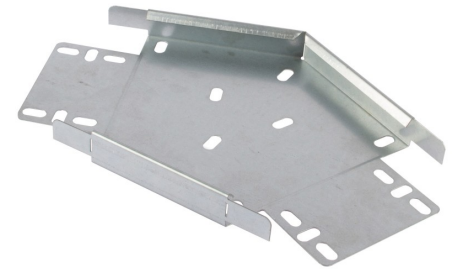
10/6/2026

Description:

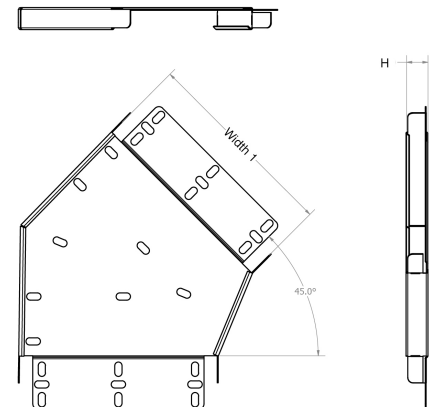
100mm 45° Flat Bend for Medium Duty Tray with Integral Coupler

Features:

- 25mm Return Flange.
- All Medium Duty cable tray accessories available up to 600mm wide.
- All fittings have integral coupling tabs and fishplates - No couplers required to aid installation.
- For 75 - 450mm wide, adjustable bends can also be used.
- Available in 3 standard designs of cable tray to suit individual applications.
- Distinctive hole pattern designed to provide maximum flexibility for the installer without compromising strength.
- Manufactured from zinc coated galvanised steel to BS EN 10346:2015.
- Special sizes and bespoke designs are available upon request.
- Lid for cable tray available upon request.
- Solid (plain) cable tray available upon request.
- Can be powder coated to customer specific RAL colour.

**Technical:****Product Type** Flat Bend**Width** 100mm**Height** 25mm**Weight** 0.35 Kgs**Angle** 45°**Gauge** Medium Duty**Material** Pre-Galvanised Steel (Zinc Coated)**Colour/Finish** Self Colour**Standards** BS EN 61537:2007; BS EN 10346:2015

The approximate weights given are for pre-galvanised finish only, in kilograms (nominal) and subject to material thickness tolerance.

Dimensions: (mm)**H** 25mm**Additional Width 1** 100mm

Tamlex | Harcourt | Halesfield 15 | Telford | Shropshire | TF7 4ER

T: 01952 586689 **E:** sales@tamlex.co.uk **W:** www.tamlex.co.uk