

**Product Code:**

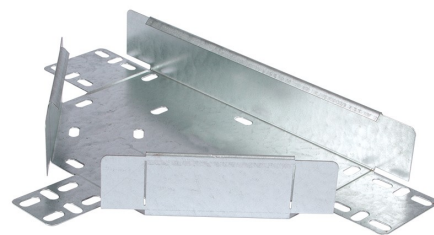
PHF100-FTC/ZM

Product Range:Cable Tray, Zinc Magnesium,
Heavy Duty Accessories**Issue Date:**

15/6/2026

**Description:**100mm Flat Equal Tee for Heavy Duty ZM Cable Tray with
Integral Coupler**Features:**

- 50mm Return Flange.
- All Heavy Duty cable tray accessories available up to 900mm wide.
- All fittings have integral coupling tabs and fishplates - No couplers required to aid installation.
- For 75 - 450mm wide, adjustable bends can also be used.
- Available in 3 standard designs of cable tray to suit individual applications.
- Distinctive hole pattern designed to provide maximum flexibility for the installer without compromising strength.
- Manufactured from Zinc Magnesium steel to BS EN 10346:2015.
- Special sizes and bespoke designs are available upon request.
- Lid for cable tray available upon request.
- Solid (plain) cable tray available upon request.
- Can be powder coated to customer specific RAL colour.

**Technical:****Product Type** Flat Tee**Width** 100mm**Height** 50mm**Weight** 0.60 Kgs**Gauge** Heavy Duty**Material** Zinc Magnesium Steel ZM310**Colour/Finish** Self Colour**Standards** BS EN 61537:2007; BS EN 10346:2015

The approximate weights given are for pre-galvanised finish only, in kilograms (nominal) and subject to material thickness tolerance.

Dimensions: (mm)**H** 50mm**Additional Width 1** 100mm**Additional Width 2** 134mm