

**Product Code:**

BTF100/60

Product Range:

FastConnect Basket Tray

Issue Date:

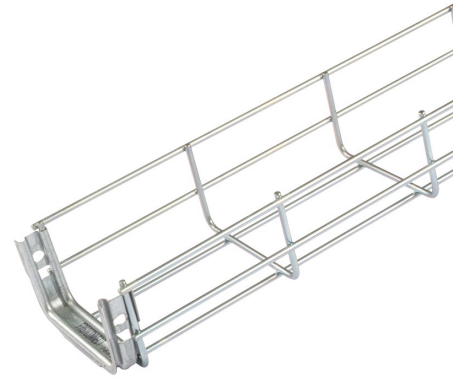
4/4/2025

Description:

100mm x 60mm FastConnect Basket Tray (3m Length)

Features:

- FastConnect Basket Tray supplied in 3m length.
- 60mm depth as standard.
- Rounded safety edge that prevents damage to the cables and harm to the installer.
- Supplied with pre-installed FastConnect coupler as standard.
- FastConnect couplers can be easily removed and repositioned if necessary.
- Can be powder coated to customer specific RAL colour.
- Sections of FastConnect Basket Tray can be joined together without tools in record time.

**Technical:****Depth** 60mm**Width** 100mm**Length** 3000mm**Material** Electro Zinc (E.Z) in accordance with UNE-EN 2081:2010**Finish** Self Colour**Product Type** Basket Tray**Standard** BS EN 61537:2007**Supplied With** Pre-Installed FastConnect Coupler

The approximate weights given are for pre-galvanised finish only, in kilograms (nominal) and subject to material thickness tolerance.

**Dimensions:
(mm)****H** 60mm**W** 100mm**L** 3m