



Product Code:

PHF150-ADJ/ZM

Product Range:

Heavy Duty Accessories, Zinc Magnesium, Cable Tray

Issue Date:

3/14/2025

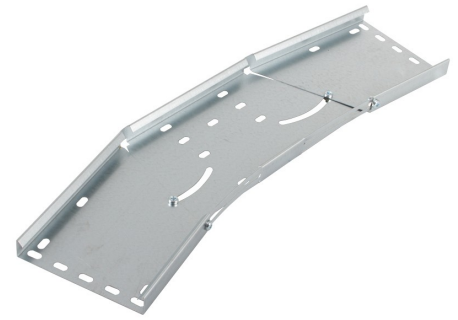


Description:

150mm 5°-95° Adjustable Bend for Heavy Duty ZM Cable Tray

Features:

- 50mm Return Flange.
- All Heavy Duty cable tray accessories available up to 900mm wide.
- All fittings have integral coupling tabs and fishplates - No couplers required to aid installation.
- For 75 - 450mm wide, adjustable bends can also be used.
- Available in 3 standard designs of cable tray to suit individual applications.
- Distinctive hole pattern designed to provide maximum flexibility for the installer without compromising strength.
- Manufactured from Zinc Magnesium steel to BS EN 10346:2015.
- Special sizes and bespoke designs are available upon request.
- Lid for cable tray available upon request.
- Solid (plain) cable tray available upon request.
- Can be powder coated to customer specific RAL colour.



Technical:

Depth

Width 150mm

Length

Material BS EN 10346 Steel

Finish Zinc Magnesium ZM310 Steel

Trunking Type Adjustable Bend

Standard BS EN 61537; BS EN 10346

Supplied With

Extra Information

Trunking Weights:

1. Compartment	2. Compartment	3. Compartment
----------------	----------------	----------------

The approximate weights given are for pre-galvanised finish only, in kilograms (nominal) and subject to material thickness tolerance.

Dimensions: (mm)

H

W

L

P1

P2

Important: