

**Product Code:**

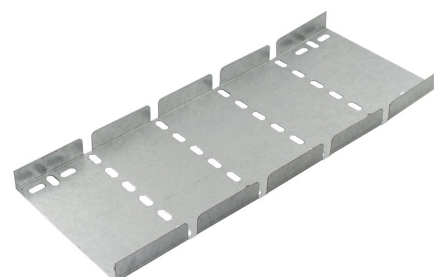
PMF150-UR/ZM

**Product Range:**Cable Tray, Zinc Magnesium,  
Medium Duty Accessories**Issue Date:**

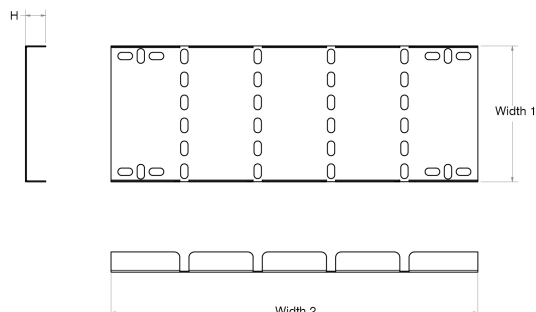
28/4/2026

**Description:**150mm Universal Riser for Medium Duty ZM Cable Tray with  
Integral Coupler**Features:**

- 25mm Return Flange.
- All Medium Duty cable tray accessories available up to 600mm wide.
- All fittings have integral coupling tabs and fishplates - No couplers required to aid installation.
- For 75 - 450mm wide, adjustable bends can also be used.
- Available in 3 standard designs of cable tray to suit individual applications.
- Distinctive hole pattern designed to provide maximum flexibility for the installer without compromising strength.
- Manufactured from Zinc Magnesium steel to BS EN 10346:2015.
- Special sizes and bespoke designs are available upon request.
- Lid for cable tray available upon request.
- Solid (plain) cable tray available upon request.
- Can be powder coated to customer specific RAL colour.

**Technical:****Product Type** Universal Riser**Width** 150mm**Height** 25mm**Weight** 0.55 Kgs**Gauge** Medium Duty**Material** Zinc Magnesium Steel ZM310**Colour/Finish** Self Colour**Standards** BS EN 61537:2007; BS EN 10346:2015

The approximate weights given are for pre-galvanised finish only, in kilograms (nominal) and subject to material thickness tolerance.

**Dimensions: (mm)****H** 25mm**Additional Width 1** 150mm

Tamlex | Harcourt | Halesfield 15 | Telford | Shropshire | TF7 4ER

**T:** 01952 586689 **E:** sales@tamlex.co.uk **W:** www.tamlex.co.uk