

**Product Code:**

K662G

**Product Range:**

Steel Boxes, Adaptable Boxes

**Issue Date:**

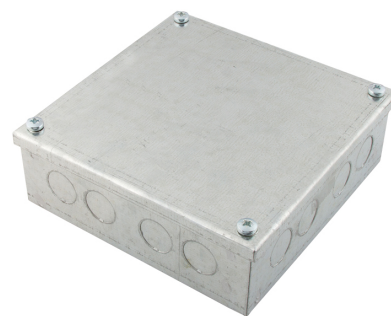
3/9/2025

**Description:**

150mm x 150mm x 50mm Galvanised Adaptable Box

**Features:**

- 20mm Knockout holes.
- Adaptable boxes can also be supplied without knockouts (plain) or with knockouts as standard.
- Boxes have spot welded corners for extra strength.
- Non-standard adaptable boxes can be manufactured in various sizes upon request.
- Available in a wide range of styles and sizes for domestic, commercial and industrial installations.
- Can be powder coated to customer specific RAL colour.

**Technical:****Product Type** Adaptable Box**Width** 150mm**Depth** 50mm**Height** 150mm**Weight** 0.67 Kgs**Material** Pre-Galvanised Steel (Zinc Coated)**Colour/Finish** Self Colour**Standards** BS EN 10346:2015**Supplied With** 20mm Knockouts

The approximate weights given are for pre-galvanised finish only, in kilograms (nominal) and subject to material thickness tolerance.

Tamlex | Harcourt | Halesfield 15 | Telford | Shropshire | TF7 4ER

**T:** 01952 586689 **E:** sales@tamlex.co.uk **W:** www.tamlex.co.uk