

**Product Code:**

GCA63

Product Range:Cable Trunking, Trunking
Accessories**Issue Date:**

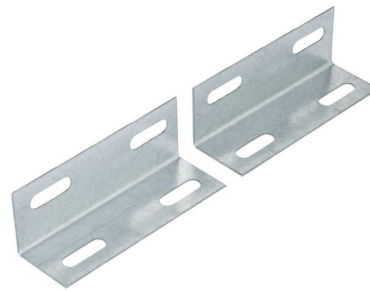
31/3/2025

Description:

150mm x 75mm Flange Coupler (Pair)

Features:

- Flange couplers are used for attaching and positioning steel trunking directly on a wall or enclosure.



Images used for illustrative purposes only

Technical:**Depth** 150mm**Width** 150mm**Material** Pre-Galvanised Steel (Zinc Coated)**Finish** Self Colour**Trunking Type** Coupler**Standard** BS EN 50085-2-1 2006; BS EN 10346

The approximate weights given are for pre-galvanised finish only, in kilograms (nominal) and subject to material thickness tolerance.