

**Product Code:**

TB253

**Product Range:**Strut Channel & Support, Strut  
Accessories**Issue Date:**

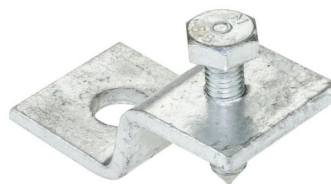
9/5/2025

**Description:**

2 Hole Z Beam Clamp

**Features:**

- 2 Hole Z Beam Clamp supplied with cone pointed screw (TF050).
- 14mm holes for use with Tamlex strut framework system.
- Made from 6mm thick steel.
- All dimensions subject to commercial tolerance.
- Channel nut not included.

**Technical:****Material** Post Hot-Dipped Galvanised (HDG)**Finish** Post Hot-Dipped Galvanised (HDG)**Product Type** Beam Clamp**Standard** BS EN ISO 1461:2009; BS 6946**Supplied With** Cone pointed screw (TF050).

The approximate weights given are for pre-galvanised finish only, in kilograms (nominal) and subject to material thickness tolerance.