

**Product Code:**

MHF/225/ZM

**Product Range:**Heavy Duty, Zinc Magnesium,  
Cable Tray**Issue Date:**

16/7/2025

**Description:**

225mm Heavy Duty ZM Cable Tray (3m Length)

**Features:**

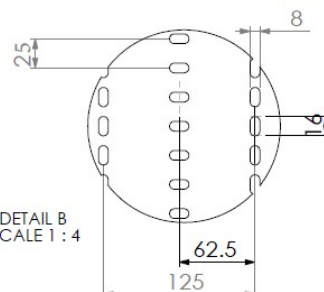
- 50mm Return Flange.
- All Heavy Duty cable tray supplied as 3 metre lengths up to 900mm wide.
- Available in 3 standard designs of cable tray to suit individual applications.
- Distinctive hole pattern designed to provide maximum flexibility for the installer without compromising strength.
- Manufactured from Zinc Magnesium steel to BS EN 10346:2015.
- Special sizes and bespoke designs are available upon request.
- Lid for cable tray available upon request.
- Solid (plain) cable tray available upon request.
- Can be powder coated to customer specific RAL colour.

**Technical:****Product Type** Cable Tray**Width** 225mm**Height** 50mm**Length** 3000mm**Weight** 7.32 Kgs**Gauge** Heavy Duty**Material** Zinc Magnesium Steel ZM310**Colour/Finish** Self Colour**Standards** BS EN 61537:2007; BS EN 10346:2015

The approximate weights given are for pre-galvanised finish only, in kilograms (nominal) and subject to material thickness tolerance.

**Dimensions**

Length = 3m

DETAIL A  
SCALE 1 : 2DETAIL B  
SCALE 1 : 4