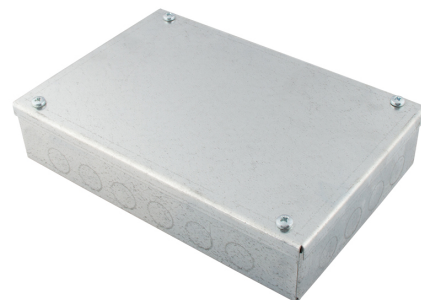




Product Code:	Product Range:	Issue Date:
K962G	Steel Boxes, Adaptable Boxes	3/9/2025

Description:
225mm x 150mm x 50mm Galvanised Adaptable Box

- Features:**
- 20mm Knockout holes.
 - Adaptable boxes can also be supplied without knockouts (plain) or with knockouts as standard.
 - Boxes have spot welded corners for extra strength.
 - Non-standard adaptable boxes can be manufactured in various sizes upon request.
 - Available in a wide range of styles and sizes for domestic, commercial and industrial installations.
 - Can be powder coated to customer specific RAL colour.



Technical:
Product Type Adaptable Box
Width 225mm
Depth 50mm
Height 150mm
Weight 1.00 Kgs
Material Pre-Galvanised Steel (Zinc Coated)
Colour/Finish Self Colour
Standards BS EN 10346:2015
Supplied With 20mm Knockouts

The approximate weights given are for pre-galvanised finish only, in kilograms (nominal) and subject to material thickness tolerance.