

**Product Code:**

FSBM3

Product Range:

Modular Screed Trunking

Issue Date:

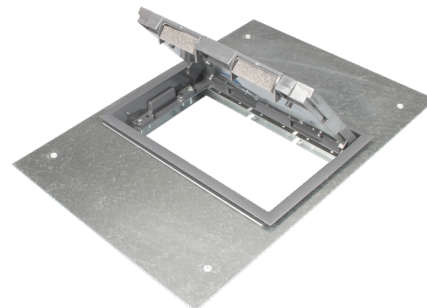
14/4/2025

Description:

3 Compartment 65mm Service Box for 350x65mm Modular Flush Screed Trunking

Features:

- 3 Compartment Flush Screed Service Box.
- Service boxes can be fitted after trunking is installed, simply by removing trunking lid.
- Service boxes can be positioned/repositioned anywhere along trunking.
- Reversible self-closing lid.
- Reinforced with steel plates with a recessed lid to allow 10mm infill.
- Durable polycarbonate trim and lid as standard.
- Cable outlets with sponge foam to prevent ingress.
- Service boxes are designed for use in office type environments and should not be installed in main walkways, corridors, gangways or in contact with wheeled traffic.
- The minimum screed depth is 68mm. Service boxes should be installed when the trunking is fitted.
- **Screed trunking must be installed on a solid foundation and completely supported by a screed ribbon..**
- Suitable for Tamlex modular flush screed trunking only.

**Technical:**

Depth 65mm

Width 350mm

Material Pre-Galvanised Steel (Zinc Coated)

Finish Self Colour

Product Type Floor Trunking

Standard BS EN 10346:2009

The approximate weights given are for pre-galvanised finish only, in kilograms (nominal) and subject to material thickness tolerance.



Product Code:	Issue Number:	Issue Date:	Issued By:
PRODUCT CODE A	A	00/00/0000	INITIALS

Description:

Description of product can go here, try to stick to STEP / web descriptions

Deflection Test:

The data shown below was gathered in tests by Tamlex, and is given in good faith. It does not, however, constitute a warranty nor imply any guarantee.

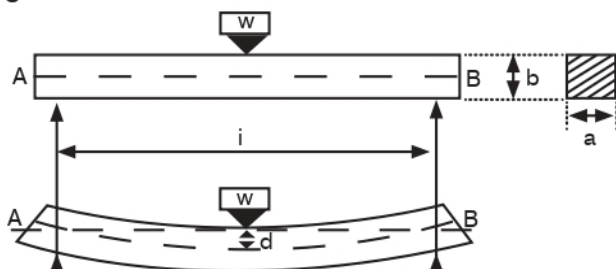


Fig. 2. Deflection of a simple beam

Supports are spaced 2 metres apart measured from the centre of the supports. Trunking lids attached to the trunking using the relevant accessories.



Part Codes	Kg/m	Initial Reading (mm)	Final Reading (mm)	Deflection (mm)	Deflection (%)
TRE22	2.50	219.5	220.5	1.0	0.050
TRE32	3.75	222.5	222.5	0.0	0.000
TRE33	5.63	196.5	198.0	1.5	0.075
TRE42	5.00	220.5	222.5	2.0	0.100
TRE43	7.50	196.5	198.0	1.5	0.075
TRE44	10.00	172.0	172.5	0.5	0.025
TRE62	7.50	222.5	223.5	1.0	0.050
TRE63	11.25	197.5	198.0	0.5	0.025
TRE64	15.00	174.5	172.5	2.0	0.100
TRE66	22.50	172.5	171.5	0.5	0.025

Cable Capacities: (maximum no. of cables 600/1000V PVC insulation)

Trunking Size	Cable Capacities										
	1.5	2.5	4	6	10	16	25	35	50	70	95
TRE22	120	82	62	48	29	21	14	11	8	6	4
TRE32	180	123	93	73	44	32	21	16	12	9	6
TRE33	275	188	142	111	67	49	32	25	18	14	10
TRE42	243	165	125	98	59	43	28	22	16	12	9
TRE43	370	253	192	150	90	66	43	34	24	19	13
TRE44	494	337	256	200	120	88	57	45	33	25	18
TRE62	359	245	186	145	87	64	41	33	24	18	13
TRE63	551	376	285	223	134	99	64	50	36	28	20
TRE64	743	507	385	301	181	133	86	68	49	38	27
TRE66	1127	769	584	457	274	202	131	103	75	57	42