

**Product Code:**

FSB3

Product Range:

Flush Screed Trunking

Issue Date:

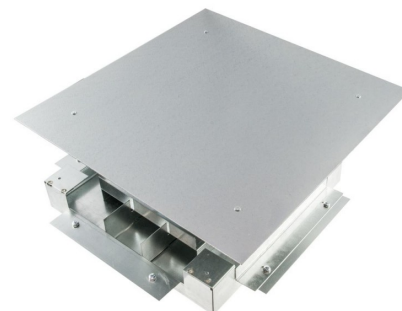
24/12/2025

Description:

3 Compartment 68mm Service Box for 225x25mm Flush Screed Trunking

Features:

- 3 Compartment Flush Screed Service Box.
- Reversible self-closing lid.
- Reinforced with steel plates with a recessed lid to allow 10mm infill.
- Durable polycarbonate trim and lid as standard.
- Cable outlets with sponge foam to prevent ingress.
- Service boxes are designed for use in office type environments and should not be installed in main walkways, corridors, gangways or in contact with wheeled traffic.
- The minimum screed depth is 68mm. Service boxes should be installed when the trunking is fitted.
- **Screed trunking must be installed on a solid foundation and completely supported by a screed ribbon..**
- Suitable for Tamlex flush screed trunking only.

**Technical:**

Product Type Flush Screed Floor Trunking

Width 225mm

Weight 3.70 Kgs

Number of Compartments

Material Pre-Galvanised Steel (Zinc Coated)

Colour/Finish Self Colour

Standards BS EN 10346:2015

Important:

Screed trunking must be installed on a solid foundation and completely supported across its complete width by a screed ribbon.

Extra Information

The galvanised trunking lids and service boxes should be in position before the screed is poured to ensure the pressure of the screed does not distort the side walls of the trunking.

The approximate weights given are for pre-galvanised finish only, in kilograms (nominal) and subject to material thickness tolerance.

Tamlex | Harcourt | Halesfield 15 | Telford | Shropshire | TF7 4ER

T: 01952 586689 **E:** sales@tamlex.co.uk **W:** www.tamlex.co.uk