

**Product Code:**

FSJ/93

Product Range:

Flush Screed Trunking

Issue Date:

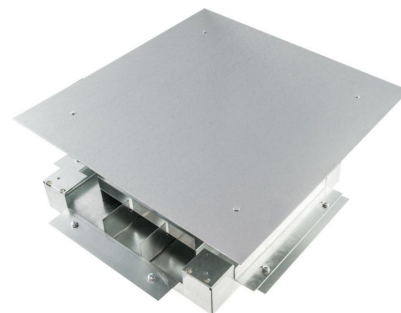
29/3/2025

Description:

3 Compartment Intersection for 225x25mm Flush Screed Trunking

Features:

- Intersection to be used as flat bend, tee and fourway.
- Intersections are 55mm deep to allow the maximum cable capacity throughout the system.
- Reinforced lid to allow foot traffic.
- Fillets have rubber gasket strip fitted to increase stability and reduce lid deflection.
- Intersections should be installed when the trunking is installed.
- **Screed trunking must be installed on a solid foundation and completely supported by a screed ribbon.**

**Technical:**

Depth 55mm

Width 225mm

Material Pre-Galvanised Steel (Zinc Coated)

Finish Self Colour

Trunking Type Floor Trunking

Standard BS EN 10346:2009

The approximate weights given are for pre-galvanised finish only, in kilograms (nominal) and subject to material thickness tolerance.