

**Product Code:**

FSJM350

Product Range:

Modular Screed Trunking

Issue Date:

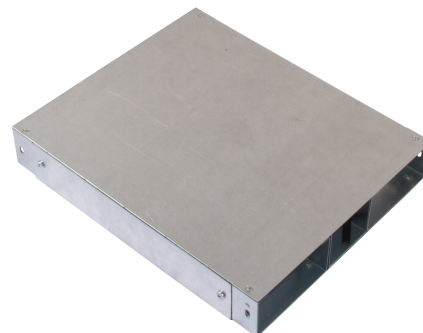
15/4/2025

Description:

3 Compartment Intersection for 350x65mm Modular Flush Screed Trunking

Features:

- Intersection to be used as flat bend, tee and fourway.
- Intersections are 65mm deep to allow the maximum cable capacity throughout the system.
- Reinforced lid to allow foot traffic.
- Fillets have rubber gasket strip fitted to increase stability and reduce lid deflection.
- Intersections should be installed when the trunking is installed.
- **Screed trunking must be installed on a solid foundation and completely supported by a screed ribbon.**

**Technical:**

Depth 65mm

Width 350mm

Material Pre-Galvanised Steel (Zinc Coated)

Finish Self Colour

Product Type Floor Trunking

Standard BS EN 10346:2009

The approximate weights given are for pre-galvanised finish only, in kilograms (nominal) and subject to material thickness tolerance.