

**Product Code:**

FSIR/3

Product Range:

Flush Screed Trunking

Issue Date:

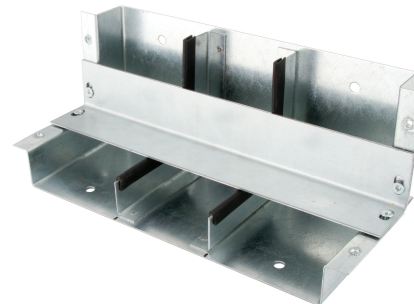
13/6/2026

Description:

3 Compartment Rising Bend for 225x25mm Flush Screed Trunking

Features:

- Riser Bend fitting is compatible with the Tamlex flush screed trunking system.
- 3 segregated compartments.
- Shallow 25mm deep trunking profile.
- Fillets have rubber gasket strip fitted to increase stability and reduce lid deflection.
- **Screed trunking must be installed on a solid foundation and completely supported by a screed ribbon.**

**Technical:****Product Type** Flush Screed Floor Trunking**Width** 225mm**Weight** 0.85 Kgs**Number of Compartments****Material** Pre-Galvanised Steel (Zinc Coated)**Colour/Finish** Self Colour**Standards** BS EN 10346:2015**Important:**

Screed trunking must be installed on a solid foundation and completely supported across its complete width by a screed ribbon.

Extra Information

The galvanised trunking lids and service boxes should be in position before the screed is poured to ensure the pressure of the screed does not distort the side walls of the trunking.

The approximate weights given are for pre-galvanised finish only, in kilograms (nominal) and subject to material thickness tolerance.