

**Product Code:**

TRE129

Product Range:Turnbuckle Trunking Lengths,
Cable Trunking, Turnbuckle
Trunking**Issue Date:**

20/8/2025

**Description:**

300mm x 225mm Turnbuckle Galvanised Steel Trunking (3m Length)

Features:

- Single Compartment.
- Turnbuckle lid fixing for speed and convenience.
- Manufactured from zinc galvanised steel strip to BS EN 10346:2015.
- 4 or 8 lid fixing per 3m length.
- All lid fixings and couplers are included as standard.
- Multi Compartment trunking and accessories available.
- Special sizes and bespoke designs are available upon request.
- Tamperproof lid fixing option available on request.
- Can be powder coated to customer specific RAL colour.
- IP4X Cover straps are only required for Length to Length joins. (Sold Separately).

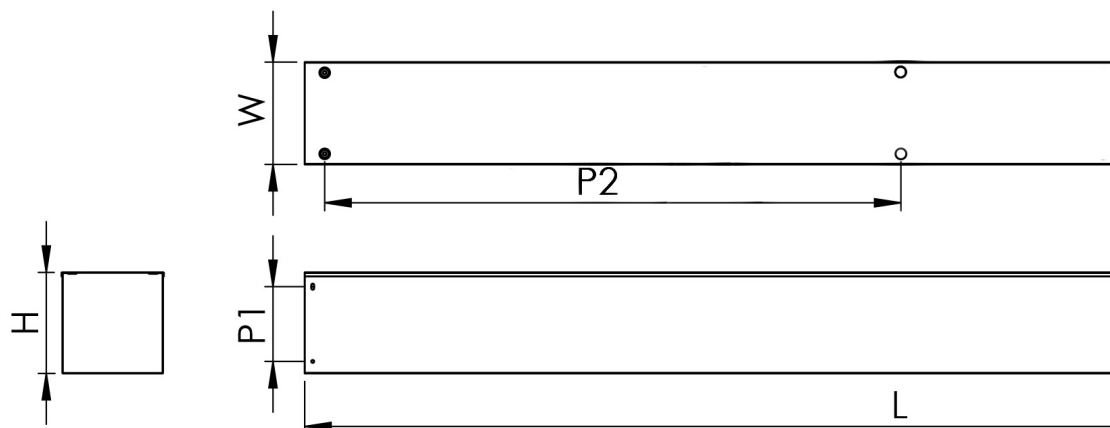
**Technical:****Product Type** Trunking**Width** 300mm**Height** 225mm**Length** 3000mm**Weight** 27.95 Kgs**Number of Compartments****Material** Pre-Galvanised Steel (Zinc Coated)**Colour/Finish** Self Colour**Standards** BS EN 50085-2-1 2006; BS EN 10346:2015**Supplied With** Turnbuckle lid fixings and coupler included.**Important:**

Tamlex cable trunking is designed with strength and durability in mind, trunking must be installed so that the lid does not bear any cable weight. Incorrect installation may affect the integrity of the system and is not recommended., with the main body engineered to support the weight of installed cables. To ensure optimal performance and safety

Trunking Weights:

| 1. Compartment | 2. Compartment | 3. Compartment |
|----------------|----------------|----------------|
| 27.95 Kgs | 35.88 Kgs | 42.25 Kgs |

The approximate weights given are for pre-galvanised finish only, in kilograms (nominal) and subject to material thickness tolerance.

**Dimensions:
(mm)****H** 227mm**W** 302mm**L** 3000mm**P1** 87mm**P2** 1350mm

Deflection Test:

The data shown below was gathered in tests by Tamlex, and is given in good faith. It does not, however, constitute a warranty nor imply any guarantee.

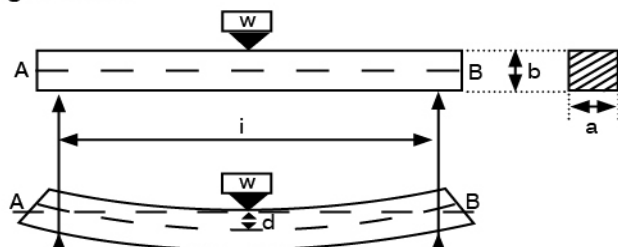
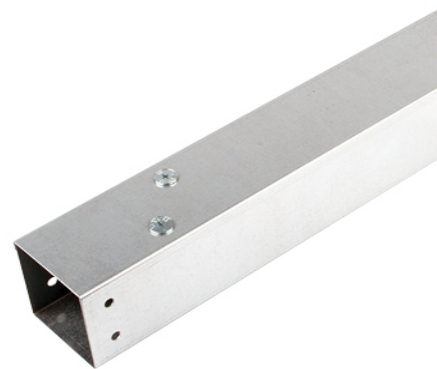


Fig. 2. Deflection of a simple beam



Supports are spaced 2 metres apart measured from the centre of the supports. Trunking lids attached to the trunking using the relevant accessories.

| Part Codes | Kg/m | Initial Reading (mm) | Final Reading (mm) | Deflection (mm) | Deflection (%) |
|------------|-------|----------------------|--------------------|-----------------|----------------|
| TGRE22 | 2.50 | 219.5 | 220.5 | 1.0 | 0.050 |
| TGRE32 | 3.75 | 222.5 | 222.5 | 0.0 | 0.000 |
| TGRE33 | 5.63 | 196.5 | 198.0 | 1.5 | 0.075 |
| TGRE42 | 5.00 | 220.5 | 222.5 | 2.0 | 0.100 |
| TGRE43 | 7.50 | 196.5 | 198.0 | 1.5 | 0.075 |
| TGRE44 | 10.00 | 172.0 | 172.5 | 0.5 | 0.025 |
| TGRE62 | 7.50 | 222.5 | 223.5 | 1.0 | 0.050 |
| TGRE63 | 11.25 | 197.5 | 198.0 | 0.5 | 0.025 |
| TGRE64 | 15.00 | 174.5 | 172.5 | 2.0 | 0.100 |
| TGRE66 | 22.50 | 172.5 | 171.5 | 0.5 | 0.025 |

Cable Capacities: (maximum no. of cables 600/1000V PVC insulation)

| Trunking Size | 1.5 | 2.5 | 4 | 6 | 10 | 16 | 25 | 35 | 50 | 70 | 95 |
|---------------|------|-----|-----|-----|-----|-----|-----|-----|----|----|----|
| TGRE22 | 120 | 82 | 62 | 48 | 29 | 21 | 14 | 11 | 8 | 6 | 4 |
| TGRE32 | 180 | 123 | 93 | 73 | 44 | 32 | 21 | 16 | 12 | 9 | 6 |
| TGRE33 | 275 | 188 | 142 | 111 | 67 | 49 | 32 | 25 | 18 | 14 | 10 |
| TGRE42 | 243 | 165 | 125 | 98 | 59 | 43 | 28 | 22 | 16 | 12 | 9 |
| TGRE43 | 370 | 253 | 192 | 150 | 90 | 66 | 43 | 34 | 24 | 19 | 13 |
| TGRE44 | 494 | 337 | 256 | 200 | 120 | 88 | 57 | 45 | 33 | 25 | 18 |
| TGRE62 | 359 | 245 | 186 | 145 | 87 | 64 | 41 | 33 | 24 | 18 | 13 |
| TGRE63 | 551 | 376 | 285 | 223 | 134 | 99 | 64 | 50 | 36 | 28 | 20 |
| TGRE64 | 743 | 507 | 385 | 301 | 181 | 133 | 86 | 68 | 49 | 38 | 27 |
| TGRE66 | 1127 | 769 | 584 | 457 | 274 | 202 | 131 | 103 | 75 | 57 | 42 |