

**Product Code:**

TNEO1212

**Product Range:**Turnbuckle Accessories, Cable  
Trunking**Issue Date:**

19/4/2025

**Description:**300mm x 300mm 90° IP4X Turnbuckle Sharp Bend Outside  
Lid**Features:**

- Tamlex offers a comprehensive range of sharp bends and tees.
- Integrated IP4X compliance as standard - no need to order additional components.
- All bends are supplied with built-in threaded couplers to allow them to be fitted directly to the trunking using an M6 screw.
- All lids are secured using a turnbuckle fixing.
- Multi Compartment trunking and accessories available.
- Special sizes and bespoke designs are available upon request.
- Tamperproof lid fixing option available on request.
- Can be powder coated to customer specific RAL colour.

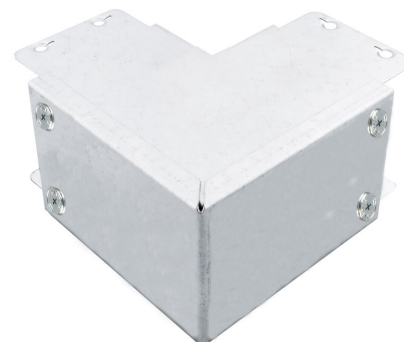


Image for illustrative purposes only

**Technical:****Depth** 300mm**Width** 300mm**Material** Pre-Galvanised Steel (Zinc Coated)**Finish** Self Colour**Product Type** Sharp Bend**Standard** BS EN 50085-2-1 2006; BS EN 10346**Important:**

Cable trunking is designed such that the main body carries the weight of cables. Trunking should NOT be installed in any way that causes the lid to carry the cable weight.

**Trunking Weights:**

1. Compartment	2. Compartment	3. Compartment
4.204 Kg	5.144 Kg	6.084 Kg

The approximate weights given are for pre-galvanised finish only, in kilograms (nominal) and subject to material thickness tolerance.

**Dimensions: (mm)****H** 302mm**W** 298mm**L** 478mm**P1** 87mm