

**Product Code:**

TGFT1212

Product Range:Turnbuckle Accessories, Cable
Trunking**Issue Date:**

20/4/2025

**Description:**

300mm x 300mm IP4X Turnbuckle Gusset Fourway

Features:

- Tamlex offers a comprehensive range of gusset fourway/crossovers which allow a greater bend radius for cables.
- Integrated IP4X compliance as standard - no need to order additional components.
- All fourway are supplied with built-in threaded couplers to allow them to be fitted directly to the trunking using an M6 screw.
- All lids are secured using a turnbuckle fixing.
- Multi Compartment trunking and accessories available.
- Special sizes and bespoke designs are available upon request.
- Tamperproof lid fixing option available on request.
- Can be powder coated to customer specific RAL colour.

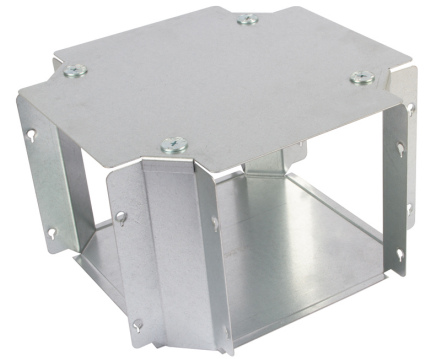


IMAGE FOR ILLUSTRATIVE PURPOSES ONLY

Technical:**Depth** 300mm**Width** 300mm**Material** Pre-Galvanised Steel (Zinc Coated)**Finish** Self Colour**Product Type** Gusset Fourway**Standard** BS EN 50085-2-1 2006; BS EN 10346**Important:**

Cable trunking is designed such that the main body carries the weight of cables. Trunking should NOT be installed in any way that causes the lid to carry the cable weight.

Trunking Weights:

1. Compartment	2. Compartment	3. Compartment
2.839 Kg	3.979 Kg	5.119 Kg

The approximate weights given are for pre-galvanised finish only, in kilograms (nominal) and subject to material thickness tolerance.

Dimensions: (mm)**H** 298mm**W** 298mm**P1** 87mm