

**Product Code:**

PMF50-FEC45

**Product Range:**

Medium Duty Accessories, Pre Galvanised, Cable Tray

**Issue Date:**

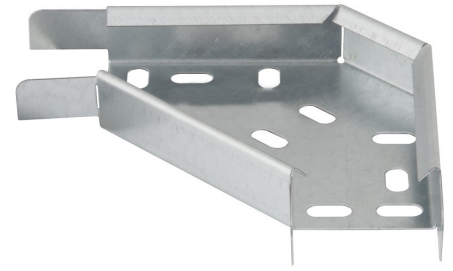
29/3/2025

**Description:**

50mm 45° Flat Bend for Medium Duty Tray with Integral Coupler

**Features:**

- 25mm Return Flange.
- All Medium Duty cable tray accessories available up to 600mm wide.
- All fittings have integral coupling tabs and fishplates - No couplers required to aid installation.
- For 75 - 450mm wide, adjustable bends can also be used.
- Available in 3 standard designs of cable tray to suit individual applications.
- Distinctive hole pattern designed to provide maximum flexibility for the installer without compromising strength.
- Manufactured from zinc coated galvanised steel to BS EN 10346:2015.
- Special sizes and bespoke designs are available upon request.
- Lid for cable tray available upon request.
- Solid (plain) cable tray available upon request.
- Can be powder coated to customer specific RAL colour.

**Technical:****Width** 50mm**Material** Pre-Galvanised Steel (Zinc Coated)**Finish** Self Colour**Trunking Type** Flat Bend**Standard** BS EN 61537; BS EN 10346

The approximate weights given are for pre-galvanised finish only, in kilograms (nominal) and subject to material thickness tolerance.

**Dimensions: (mm)****H** 25mm**Additional Width 1** 50mm