

**Product Code:**

PCT50-FW/ZM

Product Range:Light Duty Accessories, Zinc
Magnesium, Cable Tray**Issue Date:**

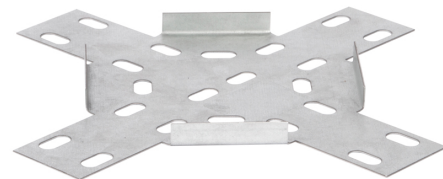
9/9/2025

**Description:**

50mm Fourway Intersection for Light Duty ZM Cable Tray

Features:

- 10mm Straight Edge.
- Light Duty cable tray accessories available up to 450mm wide.
- Cable tray available in 3 types to suit individual applications.
- Distinctive hole pattern designed to provide maximum flexibility for the installer without compromising strength.
- All light duty tray has a notched end eliminating the need for a separate coupler.
- Manufactured from Zinc Magnesium steel to BS EN 10346:2015.
- Special sizes and bespoke designs are available upon request.
- Lid for cable tray available upon request.
- Solid (plain) cable tray available upon request.
- Can be powder coated to customer specific RAL colour.

**Technical:****Product Type** Flat Fourway**Width** 50mm**Height** 10mm**Weight** 0.15 Kgs**Gauge** Light Duty**Material** Zinc Magnesium Steel ZM310**Colour/Finish** Self Colour**Standards** BS EN 61537:2007; BS EN 10346:2015**Pack Quantity** 1

The approximate weights given are for pre-galvanised finish only, in kilograms (nominal) and subject to material thickness tolerance.

Dimensions: (mm)**H** 10mm**Additional Width 1** 50mm**Additional Width 2** 84mm

Tamlex | Harcourt | Halesfield 15 | Telford | Shropshire | TF7 4ER

T: 01952 586689 **E:** sales@tamlex.co.uk **W:** www.tamlex.co.uk