

**Product Code:**

LBE 3

Product Range:

Lighting Trunking

Issue Date:

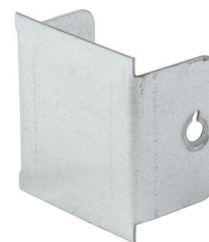
18/2/2026

Description:

50mm x 50mm Blank Stop End

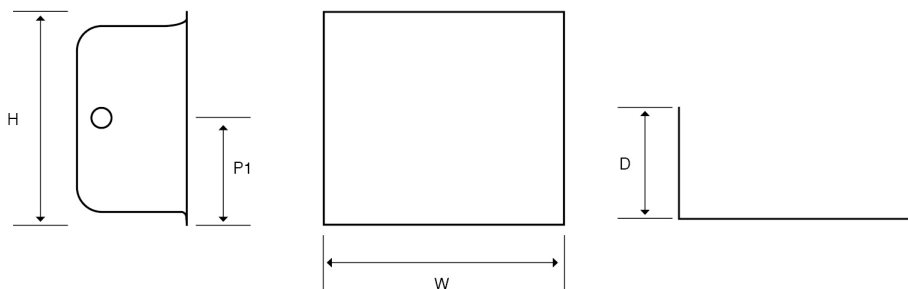
Features:

- A wide range of accessories are available to fit all sizes of trunking.
- Can be powder coated to customer specific RAL colour.

**Technical:****Product Type** Stop End**Width** 50mm**Height** 50mm**Weight** 0.02 Kgs**Material** Pre-Galvanised Steel (Zinc Coated)**Colour/Finish** Self Colour**Standards** BS EN 10346:2015**Important:**

To ensure optimal performance and safety, trunking must be installed so that the lid does not bear any cable weight. Incorrect installation may affect the integrity of the system and is not recommended.

The approximate weights given are for pre-galvanised finish only, in kilograms (nominal) and subject to material thickness tolerance.



Tamlex | Harcourt | Halesfield 15 | Telford | Shropshire | TF7 4ER

T: 01952 586689 **E:** sales@tamlex.co.uk **W:** www.tamlex.co.uk