

**Product Code:**

PHF600-FEC45/ZM

Product Range:

Heavy Duty Accessories, Zinc Magnesium, Cable Tray

Issue Date:

31/3/2025

**Description:**

600mm 45° Flat Bend for Heavy Duty ZM Cable Tray with Integral Coupler

Features:

- 50mm Return Flange.
- All Heavy Duty cable tray accessories available up to 900mm wide.
- All fittings have integral coupling tabs and fishplates - No couplers required to aid installation.
- For 75 - 450mm wide, adjustable bends can also be used.
- Available in 3 standard designs of cable tray to suit individual applications.
- Distinctive hole pattern designed to provide maximum flexibility for the installer without compromising strength.
- Manufactured from Zinc Magnesium steel to BS EN 10346:2015.
- Special sizes and bespoke designs are available upon request.
- Lid for cable tray available upon request.
- Solid (plain) cable tray available upon request.
- Can be powder coated to customer specific RAL colour.

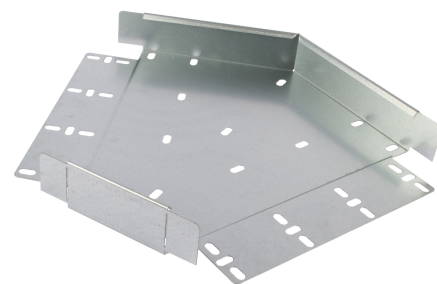


Image for illustrative purposes only

Technical:**Width** 600mm**Material** Zinc Magnesium Steel ZM310**Finish** Self Colour**Trunking Type** Flat Bend**Standard** BS EN 61537; BS EN 10346

The approximate weights given are for pre-galvanised finish only, in kilograms (nominal) and subject to material thickness tolerance.

Dimensions: (mm)**H** 50mm**Additional Width 1** 600mm