

**Product Code:**

PHF600-FWC/ZM

Product Range:

Heavy Duty Accessories, Zinc Magnesium, Cable Tray

Issue Date:

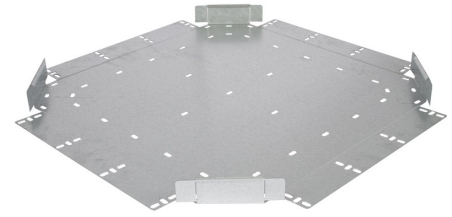
3/15/2025

**Description:**

600mm Fourway for Heavy Duty ZM Cable Tray with Integral Coupler

Features:

- 50mm Return Flange.
- All Heavy Duty cable tray accessories available up to 900mm wide.
- All fittings have integral coupling tabs and fishplates - No couplers required to aid installation.
- For 75 - 450mm wide, adjustable bends can also be used.
- Available in 3 standard designs of cable tray to suit individual applications.
- Distinctive hole pattern designed to provide maximum flexibility for the installer without compromising strength.
- Manufactured from Zinc Magnesium steel to BS EN 10346:2015.
- Special sizes and bespoke designs are available upon request.
- Lid for cable tray available upon request.
- Solid (plain) cable tray available upon request.
- Can be powder coated to customer specific RAL colour.

**Technical:****Depth****Width** 600mm**Length****Material** BS EN 10346 Steel**Finish** Zinc Magnesium ZM310 Steel**Trunking Type** Flat Fourway**Standard** BS EN 61537; BS EN 10346**Supplied With****Extra Information****Trunking Weights:**

1. Compartment 2. Compartment 3. Compartment

The approximate weights given are for pre-galvanised finish only, in kilograms (nominal) and subject to material thickness tolerance.

Dimensions: (mm)**H****W****L****P1****P2****Important:**