

**Product Code:**

PHF750-FWC

**Product Range:**Cable Tray, Pre Galvanised,  
Heavy Duty Accessories**Issue Date:**

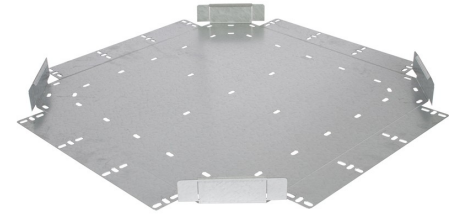
24/4/2026

**Description:**

750mm Fourway for Heavy Duty Tray with Integral Coupler

**Features:**

- 50mm Return Flange.
- All Heavy Duty cable tray accessories available up to 900mm wide.
- All fittings have integral coupling tabs and fishplates - No couplers required to aid installation.
- For 75 - 450mm wide, adjustable bends can also be used.
- Available in 3 standard designs of cable tray to suit individual applications.
- Distinctive hole pattern designed to provide maximum flexibility for the installer without compromising strength.
- Manufactured from zinc coated galvanised steel to BS EN 10346:2015.
- Special sizes and bespoke designs are available upon request.
- Lid for cable tray available upon request.
- Solid (plain) cable tray available upon request.
- Can be powder coated to customer specific RAL colour.

**Technical:****Product Type** Flat Fourway**Width** 750mm**Height** 50mm**Weight** 5.02 Kgs**Gauge** Heavy Duty**Material** Pre-Galvanised Steel (Zinc Coated)**Colour/Finish** Self Colour**Standards** BS EN 61537:2007; BS EN 10346:2015

The approximate weights given are for pre-galvanised finish only, in kilograms (nominal) and subject to material thickness tolerance.

**Dimensions: (mm)****H** 50mm**Additional Width 1** 750mm**Additional Width 2** 634mm

Tamlex | Harcourt | Halesfield 15 | Telford | Shropshire | TF7 4ER

**T:** 01952 586689 **E:** sales@tamlex.co.uk **W:** www.tamlex.co.uk