



Product Code:

PHF75-FEC

Product Range:

Cable Tray, Pre Galvanised,
Heavy Duty Accessories

Issue Date:

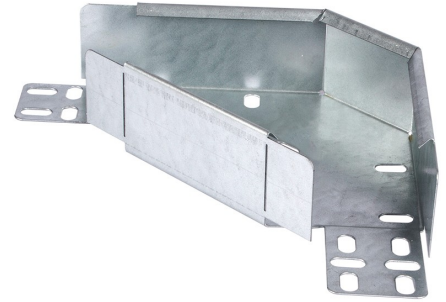
6/4/2026

Description:

75mm 90° Flat Bend for Heavy Duty Tray with Integral Coupler

Features:

- 50mm Return Flange.
- All Heavy Duty cable tray accessories available up to 900mm wide.
- All fittings have integral coupling tabs and fishplates - No couplers required to aid installation.
- For 75 - 450mm wide, adjustable bends can also be used.
- Available in 3 standard designs of cable tray to suit individual applications.
- Distinctive hole pattern designed to provide maximum flexibility for the installer without compromising strength.
- Manufactured from zinc coated galvanised steel to BS EN 10346:2015.
- Special sizes and bespoke designs are available upon request.
- Lid for cable tray available upon request.
- Solid (plain) cable tray available upon request.
- Can be powder coated to customer specific RAL colour.



Technical:

Product Type Flat Bend

Width 75mm

Height 50mm

Weight 0.36 Kgs

Angle 90°

Gauge Heavy Duty

Material Pre-Galvanised Steel (Zinc Coated)

Colour/Finish Self Colour

Standards BS EN 61537:2007; BS EN 10346:2015

The approximate weights given are for pre-galvanised finish only, in kilograms (nominal) and subject to material thickness tolerance.

Dimensions: (mm)

H 50mm

Additional Width 1 75mm

Additional Width 2 109mm

Additional Width 3 109mm

