

**Product Code:**

PCT75-FW/ZM

**Product Range:**Light Duty Accessories, Zinc  
Magnesium, Cable Tray**Issue Date:**

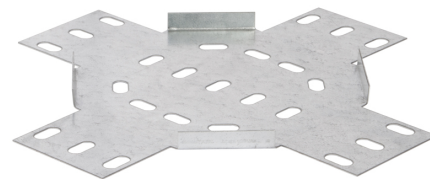
17/8/2025

**Description:**

75mm Fourway Intersection for Light Duty ZM Cable Tray

**Features:**

- 10mm Straight Edge.
- Light Duty cable tray accessories available up to 450mm wide.
- Cable tray available in 3 types to suit individual applications.
- Distinctive hole pattern designed to provide maximum flexibility for the installer without compromising strength.
- All light duty tray has a notched end eliminating the need for a separate coupler.
- Manufactured from Zinc Magnesium steel to BS EN 10346:2015.
- Special sizes and bespoke designs are available upon request.
- Lid for cable tray available upon request.
- Solid (plain) cable tray available upon request.
- Can be powder coated to customer specific RAL colour.

**Technical:****Product Type** Flat Fourway**Width** 75mm**Height** 10mm**Weight** 0.24 Kgs**Gauge** Light Duty**Material** Zinc Magnesium Steel ZM310**Colour/Finish** Self Colour**Standards** BS EN 61537:2007; BS EN 10346:2015**Pack Quantity** 1

The approximate weights given are for pre-galvanised finish only, in kilograms (nominal) and subject to material thickness tolerance.

**Dimensions: (mm)****H** 10mm**Additional Width 1** 75mm**Additional Width 2** 109mm