



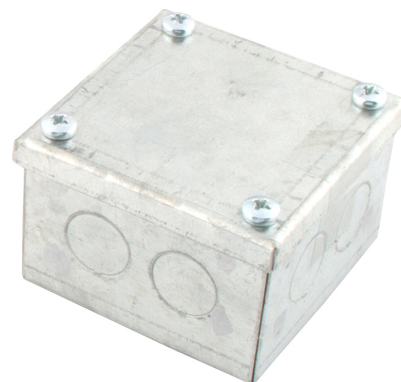
Product Code:	Product Range:	Issue Date:
K332G	Steel Boxes, Adaptable Boxes	21/12/2025

Description:

75mm x 75mm x 50mm Galvanised Adaptable Box

Features:

- 20mm Knockout holes.
- Adaptable boxes can also be supplied without knockouts (plain) or with knockouts as standard.
- Boxes have spot welded corners for extra strength.
- Non-standard adaptable boxes can be manufactured in various sizes upon request.
- Available in a wide range of styles and sizes for domestic, commercial and industrial installations.
- Can be powder coated to customer specific RAL colour.



Technical:

Product Type	Adaptable Box
Width	75mm
Depth	50mm
Height	75mm
Weight	0.25 Kgs
Material	Pre-Galvanised Steel (Zinc Coated)
Colour/Finish	Self Colour
Standards	BS EN 10346:2015
Supplied With	20mm Knockouts

The approximate weights given are for pre-galvanised finish only, in kilograms (nominal) and subject to material thickness tolerance.