

**Product Code:**

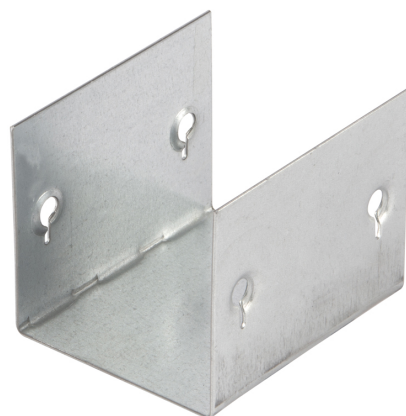
GSCU32

**Product Range:**Turnbuckle Accessories, Cable  
Trunking**Issue Date:**

24/5/2025

**Description:**50mm x 50mm U Shaped Sleeve Coupler for Turnbuckle  
Trunking (Sold in 1s)**Features:**

- Manufactured from continuously hot dipped zinc coated low carbon steel strip to BS EN 10346: 2015

**Technical:****Product Type** Coupler**Width** 50mm**Material** Pre-Galvanised Steel (Zinc Coated)**Finish** Self Colour**Product Type** Coupler**Standard** BS EN 50085-2-1 2006; BS EN 10346

The approximate weights given are for pre-galvanised finish only, in kilograms (nominal) and subject to material thickness tolerance.