

**Product Code:**

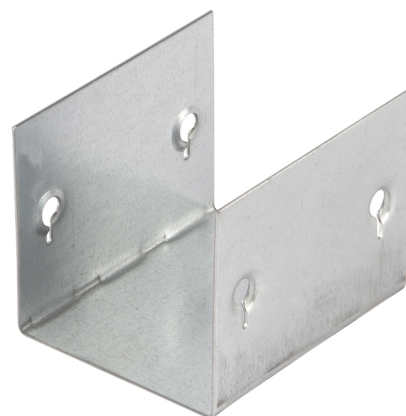
GSCU32

Product Range:Turnbuckle Accessories, Cable
Trunking**Issue Date:**

18/6/2025

Description:75mm x50mm U Shaped Sleeve Coupler for Turnbuckle
Trunking (Sold in 1s)**Features:**

- Manufactured from continuously hot dipped zinc coated low carbon steel strip to BS EN 10346:2015: 2015

**Technical:****Product Type** Coupler**Width** 50mm**Height** 50mm**Weight** 0.13 Kgs**Material** Pre-Galvanised Steel (Zinc Coated)**Colour/Finish** Self Colour**Standards** BS EN 50085-2-1 2006; BS EN 10346:2015**Important:**

Tamlex cable trunking is designed with strength and durability in mind, trunking must be installed so that the lid does not bear any cable weight. Incorrect installation may affect the integrity of the system and is not recommended., with the main body engineered to support the weight of installed cables. To ensure optimal performance and safety

Trunking Weights:

1. Compartment	2. Compartment	3. Compartment
0.13 Kgs		

The approximate weights given are for pre-galvanised finish only, in kilograms (nominal) and subject to material thickness tolerance.