

**Product Code:**

LBE 3

Product Range:

Lighting Trunking

Issue Date:

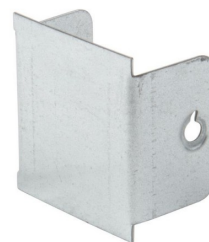
1/5/2025

Description:

50mm x 50mm Blank Stop End

Features:

- A wide range of accessories are available to fit all sizes of trunking.
- Can be powder coated to customer specific RAL colour.

**Technical:****Depth** 50mm**Width** 50mm**Material** Pre-Galvanised Steel (Zinc Coated)**Finish** Self Colour**Product Type** Lighting Trunking**Standard** BS EN 10346

The approximate weights given are for pre-galvanised finish only, in kilograms (nominal) and subject to material thickness tolerance.

