

**Product Code:**

LBE 3

**Product Range:**

Lighting Trunking

**Issue Date:**

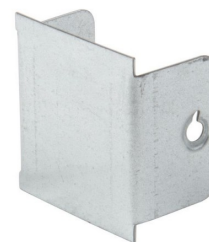
14/7/2025

**Description:**

50mm x 50mm Blank Stop End

**Features:**

- A wide range of accessories are available to fit all sizes of trunking.
- Can be powder coated to customer specific RAL colour.

**Technical:****Product Type** Stop End**Width** 50mm**Height** 50mm**Weight** 0.02 Kgs**Material** Pre-Galvanised Steel (Zinc Coated)**Colour/Finish** Self Colour**Standards** BS EN 10346:2015**Important:**

To ensure optimal performance and safety, trunking must be installed so that the lid does not bear any cable weight. Incorrect installation may affect the integrity of the system and is not recommended.

The approximate weights given are for pre-galvanised finish only, in kilograms (nominal) and subject to material thickness tolerance.

