

**Product Code:**

CSL

Product Range:Service Boxes, Replacement
Parts**Issue Date:**

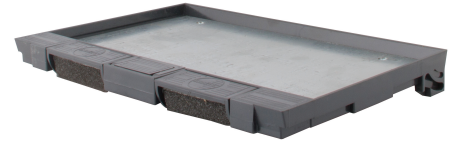
9/4/2026

Description:

Service Box Lid Only

Features:

- Reversible self-closing lid.
- Reinforced with steel plates with a recessed lid to allow 10mm infill.
- Complete with cable outlets with sponge foam to prevent ingress.

**Technical:****Product Type** Spares**Width** 285mm**Depth** 20mm**Length** 190mm**Weight** 1.24 Kgs**Material** Polycarbonate**Colour/Finish** Grey

The approximate weights given are for pre-galvanised finish only, in kilograms (nominal) and subject to material thickness tolerance.