



# Steel Cable Management **SECURITY AREAS**



TOTAL PROJECT **SOLUTIONS**

# Introduction to Tamlex

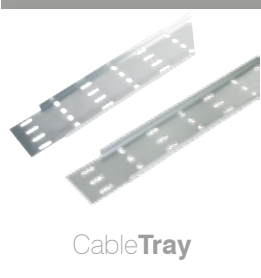
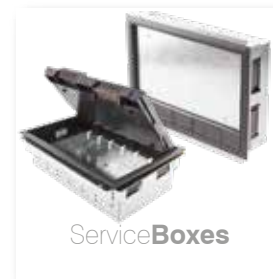
Total project solution products for the complete cable management solution; Industrial, Warehouse, Retail and Offices

## British manufacturer

...of cable management products, Tamlex is uniquely placed. With over 40 years experience and expertise, its proven capability to supply from floor service boxes to power and lighting trunking systems.

As a design orientated manufacturer, Tamlex has established many standard product ranges as well as special products to suit individual installation circumstances that incorporate features and benefits for the installer.

At Tamlex we strive for excellence in providing cable management products to our expanding customer base. We place a high value on minimising the impact to the environment and are committed to the maintenance and improvement of environmental practice in our day to day operations as a manufacturer and distributor.

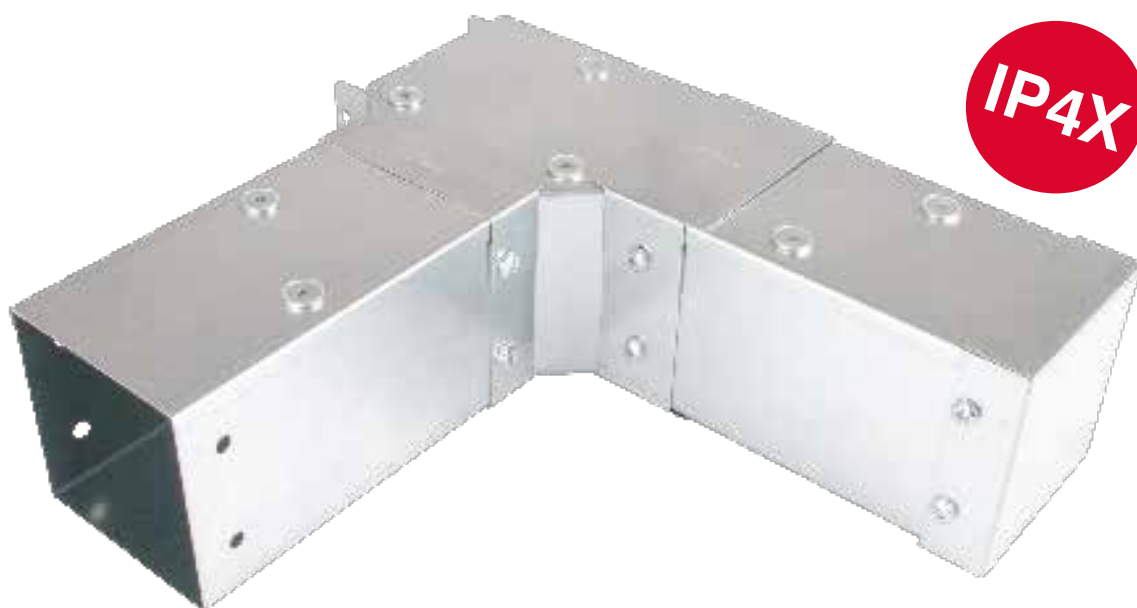


# Security Products

## Enhanced Protection

All trunking lids are secured with tamperproof screws into hank bushes which are secured into the return flange of the trunking body. As standard there would be 6 fixing points per side giving 12 secure fixings in total. This could be increased further if required for extreme circumstances.

The system can be further enhanced to provide greater physical strength by using a steel gauge up to 1.5mm thick. The trunking system can also be made impenetrable up to IP4X at all joints to stop foreign objects over 1.0mm gaining access to the cables within.



## Standard Protection

All trunking and accessory lids are secured with tamperproof fixing screws. Trunking lengths supplied with 4 fixing points per 3m length. By positioning the screws near the end of the lengths it ensures it is difficult to lever the lids off so protecting the cable inside.



## Steel Cable Trunking Systems

Tamlex can offer steel cable trunking systems with a number of security options depending on the application.





“

a bespoke solution can offer  
you **durability** and **flexibility**

”

### Protection for Cable Tray

Solid steel covers can be provided to fit over tray based cabling systems which incorporate security screw fixings. These can also be fitted over existing or new installations, providing an additional level of security and protection.



### Heavy Duty Dado Trunking

Tamlex can manufacture steel heavy duty dado type trunking that can be used in workshop type environments or where a greater level of physical protection is required. Various levels of security can be built in to the lid design to match individual requirements.

Custom made lids can be provided to give unique combinations of power and data outlets where needed. These can be pre-punched into the lids to eliminate the use of single outlet plates, ensuring the entire system is more secure.

Lids can also be supplied with pre fitted flush twin switched power sockets for extra strength.

# Security Products

## Engineered Solutions

We understand the challenges that modern infrastructure projects create. It is often the case that an off-the shelf solution is unable to answer all of your needs and requirements especially when there are specific locations, timings or environmental issues to consider.

In these situations a bespoke solution can offer you durability and flexibility that you need to successfully deliver your project on time and under budget.

Our ability to assess, design, engineer and support bespoke cable management systems has proven to be invaluable on a variety of major projects.



## Special Secure Boxes

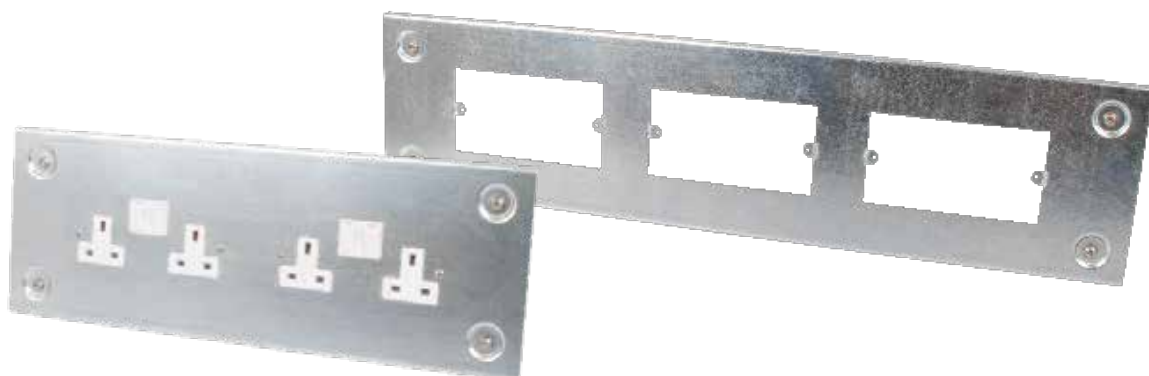
Adaptable steel boxes with a galvanised (BS EN 10346) or powder coated finish can be manufactured with tamperproof lid fixings. These can be manufactured to any size to meet the individual requirements. For extra security they can also be supplied with plain sides and can be manufactured from a variety of steel thickness for added strength.



## Covers

A range of steel covers can be manufactured to fit over existing surface mounted devices to provide a physical barrier and addition level of protection.

These are based around the design of an adaptable box and fitted with the tamperproof screws to retain the lid but still allow for authorised access to the device.





## **Tamlex**

Harcourt,  
Halesfield 15,  
Telford,  
Shropshire.  
TF7 4ER.



01952 586 689



[www.tamlex.co.uk](http://www.tamlex.co.uk)



[sales@tamlex.co.uk](mailto:sales@tamlex.co.uk)



Tamlex



@Tamlex



STEEL CABLE MANAGEMENT