



**Product Code:**

BTF60/60

**Product Range:**

FastConnect Basket Tray

**Issue:**

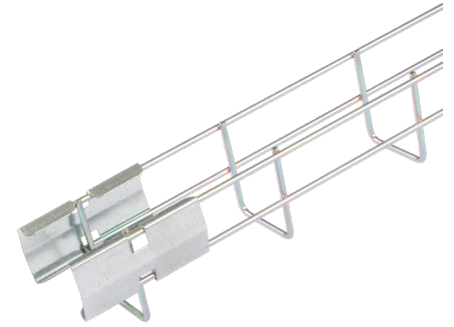
A

**Description:**

60 mm x 60 mm Basket Tray (3m Length)

**Features:**

- 60 mm depth as standard
- Steel wire frame 4.0 mm diameter
- Supplied in 3 meter lengths
- Can be powder coated to any colour



**Technical:**

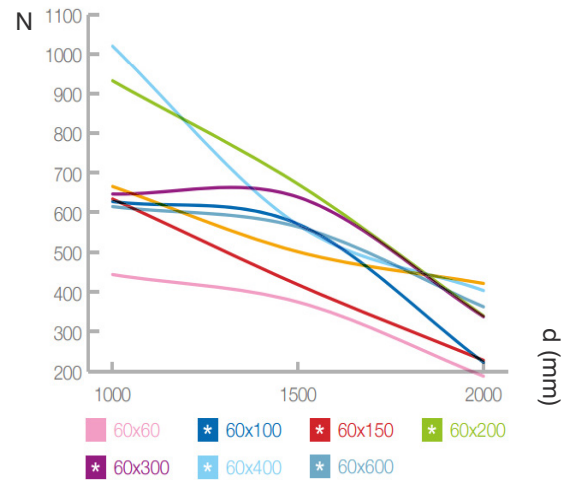
<b>Height</b>	60 mm
<b>Width</b>	60 mm
<b>Length</b>	3 m
<b>Material</b>	Zinc Plated Galvanised Steel
<b>Finish</b>	Electro Zinc
<b>Type</b>	Basket Tray
<b>Standard</b>	BS EN 61537:2007; UNE-EN 2081 :2010; UNE-EN 16120-2:2012
<b>Supplied With</b>	BT/FX60 (pair)
<b>Corrosion Rating</b>	Class 6. (IEC 61537)

**Basket Tray:**

<b>Min. Working Temperature</b>	-40°C
<b>Max. Working Temperature</b>	+150°C
<b>According to Standard</b>	BS EN 61537

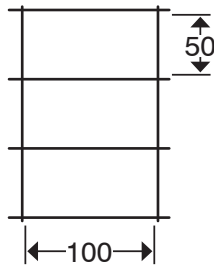
**Allowable Working Load AWL (N/m)**

The allowable working load (AWL) is the maximum load which can be applied during normal use, without danger. Therefore, the workload shall always be less than the AWL. The AWL of our products are calculated in accordance with BE EN 61537.



AWL = (Newtons/m) ; d = distance between supports (mm)  
1 Newton = 0.102 kg.

**Grid Configuration: mm**



**Dimensions: mm**

<b>H</b>	60
<b>W</b>	60
<b>L</b>	3m

