



Product Code:

PHF450-FTC

Issue Number:

1.0

Issue Date:

10/12/2019

Issued By:

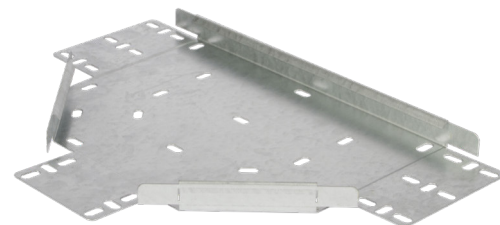
ADH

Description:

450X50MM DEEP FLAT TEE WITH COUPLERS

Features:

Built in couplers for ease of joining.
Hole pattern designed to provide maximum flexibility for positioning cable ties without compromising strength.
Manufactured from continuously hot dipped zinc coated low carbon steel strip BS EN 10346:2009.
Special sizes and designs are available upon request.
Use with heavy duty tray.



Technical:

Angle	90° Tee
Material	Continuously Hot Dipped Zinc Coated Low Carbon Steel Strip
Finish	Pre-Galvanised Steel
Tray Type	Heavy Duty Tray
Standard	BS EN 10346
Product Weight	3.302 Kg
Returned flange	Yes

Other Information:

Can be powder coated

Lids can be made to order.
Solid tray available upon request.

The approximate weights given are for pre-galvanised finish only, in kilograms (nominal) and subject to material thickness tolerance.

Dimensions: mm

Width 1	450 mm
Width 2	521 mm
Width 3	592 mm
Height	50 mm

