

**Product Code:**

PMF225-FEC

**Issue Number:**

1.0

**Issue Date:**

09/12/2019

**Issued By:**

ADH

**Description:**

225X25MM DEEP 90° FLAT ELBOW WITH COUPLERS

**Features:**

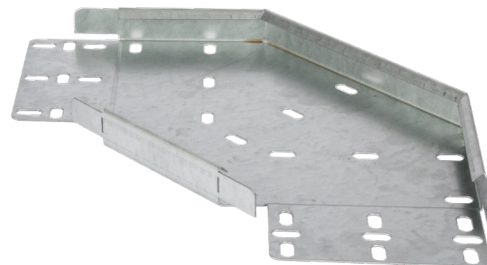
Built in couplers for ease of joining.

Hole pattern designed to provide maximum flexibility for positioning cable ties without compromising strength.

Manufactured from continuously hot dipped zinc coated low carbon steel strip BS EN 10346:2009.

Special sizes and designs are available upon request.

Use with medium duty tray.

**Technical:**

Angle	90°
Material	Continuously Hot Dipped Zinc Coated Low Carbon Steel Strip
Finish	Pre-Galvanised Steel
Tray Type	Medium Duty Tray
Standard	BS EN 10346
Product Weight	0.852 Kg
Returned flange	Yes

**Other Information:**

Can be powder coated

Lids can be made to order.

Solid tray available upon request.

The approximate weights given are for pre-galvanised finish only, in kilograms (nominal) and subject to material thickness tolerance.

**Dimensions: mm**

Width 1	225 mm
Width 2	296 mm
Width 3	296 mm
Height	25 mm

