



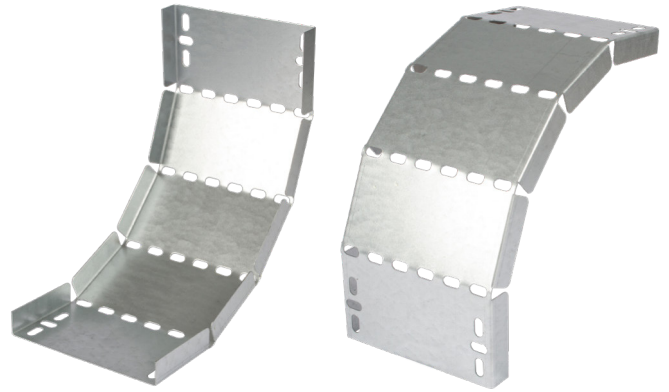
Product Code:	Issue Number:	Issue Date:	Issued By:
PMF600-UR	1.0	10/12/2019	ADH

Description:

600X25MM DEEP UNIVERSAL RISER WITH COUPLERS

Features:

Built in couplers for ease of joining.
 Bends in both directions.
 Hole pattern designed to provide maximum flexibility for positioning cable ties without compromising strength.
 Manufactured from continuously hot dipped zinc coated low carbon steel strip BS EN 10346:2009.
 Special sizes and designs are available upon request.
 Use with medium duty tray.



Technical:

Angle	Adjustable
Material	Continuously Hot Dipped Zinc Coated Low Carbon Steel Strip
Finish	Pre-Galvanised Steel
Tray Type	Medium Duty Tray
Standard	BS EN 10346
Product Weight	1.550 Kg
Returned flange	No

Other Information:

Can be powder coated
 Lids can be made to order.
 Solid tray available upon request.

The approximate weights given are for pre-galvanised finish only, in kilograms (nominal) and subject to material thickness tolerance.

Dimensions:	mm
Width 1	598 mm
Width 2	400 mm
Height	22 mm

