



|                      |                      |                    |                   |
|----------------------|----------------------|--------------------|-------------------|
| <b>Product Code:</b> | <b>Issue Number:</b> | <b>Issue Date:</b> | <b>Issued By:</b> |
| TRE126               | 1.0                  | 6/2/2020           | ADH               |

**Description:**

300X150 TURNBUCKLE GALV TRUNKING 3M LONG

**Features:**

Lid is secured using turnbuckles for quick fitting. Manufactured from continuously hot dipped zinc coated low carbon steel strip to BS EN 10346. 6 turnbuckles per 3 metre length. Special sizes can be made to order. Tamlex can offer powder coated trunking to suit any application.



**Technical:**

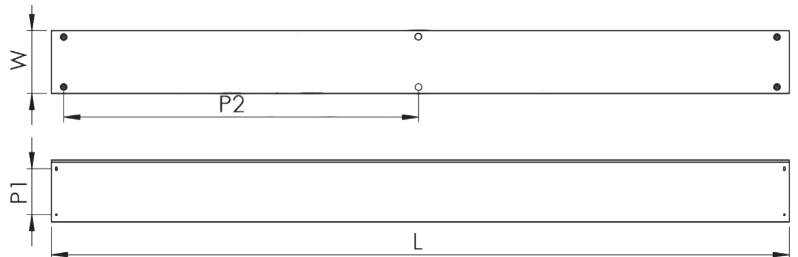
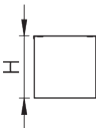
|                      |                              |
|----------------------|------------------------------|
| <b>Depth</b>         | 150 mm                       |
| <b>Width</b>         | 300 mm                       |
| <b>Length</b>        | 3000 mm                      |
| <b>Material</b>      | 1.1mm Steel                  |
| <b>Finish</b>        | Pre-Galvanised Steel         |
| <b>Trunking Type</b> | Cable Trunking               |
| <b>Standard</b>      | BS EN 10346                  |
| <b>Supplied With</b> | Coupler included as standard |
| <b>IP Rating</b>     | N/A                          |

**Important:**

Cable trunking is designed such that the main body carries the weight of cables. Trunking should NOT be installed in any way that causes the lid to carry the cable weight.

**Dimensions: mm**

|           |         |
|-----------|---------|
| <b>H</b>  | 152 mm  |
| <b>W</b>  | 302 mm  |
| <b>L</b>  | 3000 mm |
| <b>P1</b> | 87 mm   |
| <b>P2</b> | 1350 mm |



**Multi-Compartment Options**

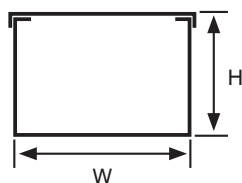
Standard trunking and accessories are available in multi compartment options. Trunking and accessories are supplied with equal compartments as standard. For unequal compartments, details must be supplied at the time of order. 3 compartment is available in width code 3 and above.

**Trunking Weights:**

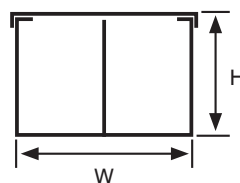
|               |               |               |
|---------------|---------------|---------------|
| 1 Compartment | 2 Compartment | 3 Compartment |
| 25.478 Kg     | 29.811 Kg     | 34.144 Kg     |

The approximate weights given are for pre-galvanised finish only, in kilograms (nominal) and subject to material thickness tolerance.

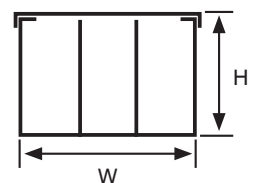
**1 Compartment**



**2 Compartments**



**3 Compartments**





**Product Code:**

**Issue Number:**

**Issue Date:**

**Issued By:**

TRE126

1.0

6/2/2020

ADH

**Description:**

300X150 TURNBUCKLE GALV TRUNKING 3M LONG

**Deflection Test:**

The data shown below was gathered in tests by Tamlex, and is given in good faith. It does not, however, constitute a warranty nor imply any guarantee.

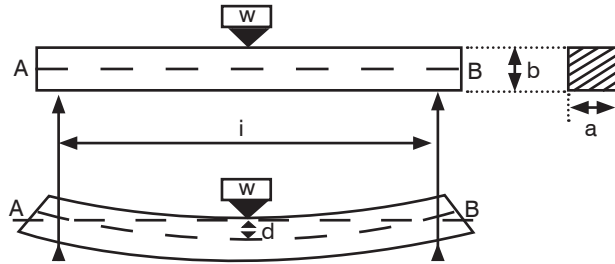
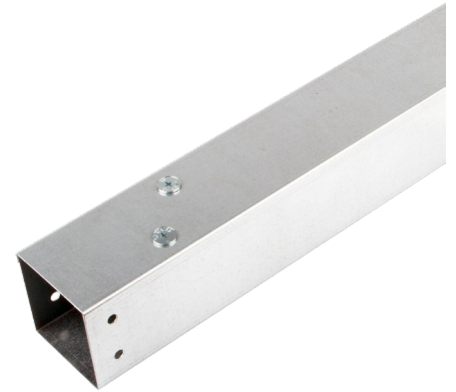


Fig. 2. Deflection of a simple beam

Supports are spaced 2 metres apart measured from the centre of the supports. Trunking lids attached to the trunking using the relevant accessories.



| Part Codes | Kg/m  | Initial Reading (mm) | Final Reading (mm) | Deflection (mm) | Deflection (%) |
|------------|-------|----------------------|--------------------|-----------------|----------------|
| TRE22      | 2.50  | 219.5                | 220.5              | 1.0             | 0.050          |
| TRE32      | 3.75  | 222.5                | 222.5              | 0.0             | 0.000          |
| TRE33      | 5.63  | 196.5                | 198.0              | 1.5             | 0.075          |
| TRE42      | 5.00  | 220.5                | 222.5              | 2.0             | 0.100          |
| TRE43      | 7.50  | 196.5                | 198.0              | 1.5             | 0.075          |
| TRE44      | 10.00 | 172.0                | 172.5              | 0.5             | 0.025          |
| TRE62      | 7.50  | 222.5                | 223.5              | 1.0             | 0.050          |
| TRE63      | 11.25 | 197.5                | 198.0              | 0.5             | 0.025          |
| TRE64      | 15.00 | 174.5                | 172.5              | 2.0             | 0.100          |
| TRE66      | 22.50 | 172.5                | 171.5              | 0.5             | 0.025          |

**Cable Capacities:** (maximum no. of cables 600/1000V PVC insulation)

| Trunking Size | 1.5  | 2.5 | 4   | 6   | 10  | 16  | 25  | 35  | 50 | 70 | 95 |
|---------------|------|-----|-----|-----|-----|-----|-----|-----|----|----|----|
| TRE22         | 120  | 82  | 62  | 48  | 29  | 21  | 14  | 11  | 8  | 6  | 4  |
| TRE32         | 180  | 123 | 93  | 73  | 44  | 32  | 21  | 16  | 12 | 9  | 6  |
| TRE33         | 275  | 188 | 142 | 111 | 67  | 49  | 32  | 25  | 18 | 14 | 10 |
| TRE42         | 243  | 165 | 125 | 98  | 59  | 43  | 28  | 22  | 16 | 12 | 9  |
| TRE43         | 370  | 253 | 192 | 150 | 90  | 66  | 43  | 34  | 24 | 19 | 13 |
| TRE44         | 494  | 337 | 256 | 200 | 120 | 88  | 57  | 45  | 33 | 25 | 18 |
| TRE62         | 359  | 245 | 186 | 145 | 87  | 64  | 41  | 33  | 24 | 18 | 13 |
| TRE63         | 551  | 376 | 285 | 223 | 134 | 99  | 64  | 50  | 36 | 28 | 20 |
| TRE64         | 743  | 507 | 385 | 301 | 181 | 133 | 86  | 68  | 49 | 38 | 27 |
| TRE66         | 1127 | 769 | 584 | 457 | 274 | 202 | 131 | 103 | 75 | 57 | 42 |