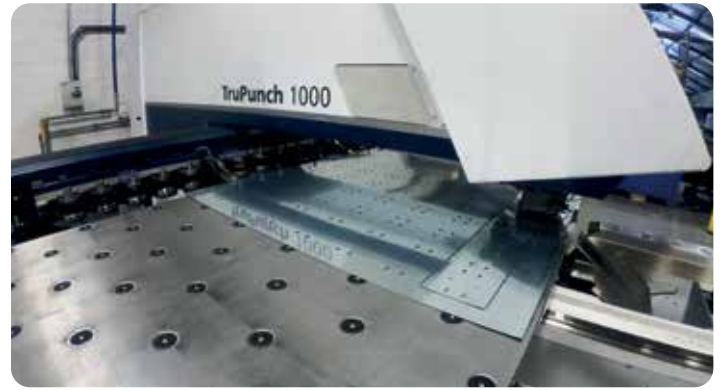




PRE-FABRICATED SOLUTIONS

BRITISH MANUFACTURERS OF PVCu & STEEL CABLE MANAGEMENT SOLUTIONS

TAMLEX.CO.UK | CENTAURMFG.COM



PVCu CABLE MANAGEMENT

Manufacturing in Britain for 50 years, Centaur has become a leading name in the PVCu cable management market. From conduits and boxes to three compartment trunking, power poles and posts.

We have developed a comprehensive range of products to satisfy the commercial and specification markets.



STEEL CABLE MANAGEMENT

With over 55 years experience and expertise in providing cable management systems to the highest standard and with its proven capability to supply everything from floor service boxes to power and lighting trunking systems, Tamlex is also uniquely placed to offer bespoke solutions to meet any customer requirement.



**MANUFACTURING OPERATIONS
CENTRALLY LOCATED IN THE
HEART OF THE UK
COMBINED FOR OVER**

100 YEARS



TECHNICAL SUPPORT

Both field and office based sales teams are able to advise and offer project solutions using their experience for customer requirements.

Product information, bespoke offerings and on-site support demonstrate a small section of the technical support available.

- **FREE SITE VISIT**
- **UK WIDE DEDICATED SALES TEAM**
- **PERSONALLY ASSIGNED ACCOUNT MANAGEMENT**



CONTINUING PROFESSIONAL DEVELOPMENT

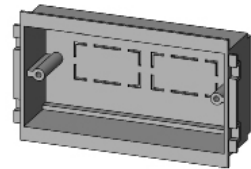
There are over 1000 institutes and professional bodies across the UK. Most institutes provide their members with Continuing Professional Development requirements generally as a required annual number of hours.

Centaur and Tamlex are now fully certified to offer a range of seminars to these professional bodies as a means of keeping skills and knowledge up to date.



BUILDING INFORMATION MODELING

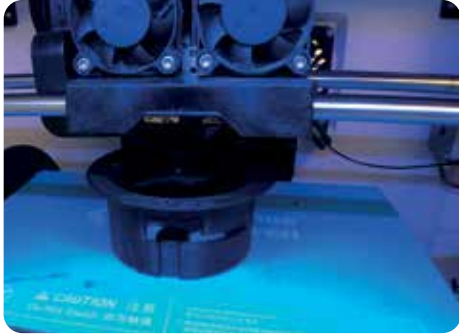
Centaur & Tamlex can provide BIM files representing a great number of our trunking and accessories. These files are used by consultants, architects, entrepreneurs and many others who work with building information modelling as part of the renewed governmental initiative.



PARTNERSHIPS



DESIGN & MANUFACTURING



DESIGN CAPABILITY

The company has always been driven by innovative design leading to quality products. With its own design and development department, investment has been made in the latest 3D design software and 3D printing technology.



TESTING & COMPLIANCE

Products are routinely tested to ensure on-going compliance to national and international standards. All products are fully supported by relevant technical construction and performance data.



RoHS & ENVIRONMENTAL POLICY

Centaur and Tamlex have assessed their products, sub products and components to ensure that there are none of the banned substances present or in a higher than allowable level than those as detailed in Directive 2011/65/EU. The company's policy is to minimize the impact on the environment by the production and the installation of its products.





WAREHOUSE STOCK

Due to the comprehensive ranges, substantial stocks are necessary to offer a next day delivery service to its UK customers and short lead times to support overseas customers.



MACHINERY & TOOLING

The company has an on-going programme investing in the latest and most efficient machinery available for its processes and producing its own custom-made specialist equipment. All tooling of its manufactured products are fully owned by the company.





CENTAUR PRODUCT PROFILE

Contemporary installations require the adequate segregation of power, audio and data cabling to ensure safety with maximum transmission rates and minimal losses. Three compartment trunking systems have become widely established to meet this requirement in market areas including educational and universities, hospitals and healthcare, governmental and general commercial installations.

Centauro provide product choices for all applications with brands such as President, Campus, Kensington and Meridian. All profiles are complemented by a comprehensive range of accessories and further supported by a fabrication department for bespoke solutions.

Commodity lines of round conduits, mini and maxi trunking, wall boxes and fittings have also enabled Centauro to become widely specified throughout the United Kingdom and beyond.



MERIDIAN



PRESIDENT



CAMPUS



**BENCH
TRUNKING**





CENTAUR PVCu CABLE MANAGEMENT

24 hour continuous processing occurs at the Centaur facility of 5000m² in Redditch. The company's investment to compound its own PVCu has shortened and protected its supply chain and enabled total control of the quality of the materials it produces.

To complement the comprehensive product range, Centaur offer a dedicated fabrication department which can provide bespoke solutions to meet individual requirements.

Further investment in precision tooling and machinery has enabled Centaur to become one of the premier suppliers of PVCu cable management products in the market.



**PVCu POWER
POLES & POSTS**



**MINI & MAXI
TRUNKING**



**HIGH IMPACT
CONDUIT**



**DRY LINING
BOXES**





TAMLEX STEEL CABLE MANAGEMENT

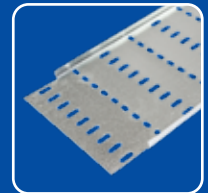
Steel cable management continues to be specified for its strength, durability and longevity. From cable tray to trunking and more recently the growth of wire basket, Tamlex can offer a complete choice to suit all industrial and commercial installations for the containment of power and data cabling.

Establishing brands such as FastConnect include products that are designed by the company with features and benefits for the user, ensuring an efficient and time saving installation. The commodity lines of steel conduits and switch and socket boxes are enhanced by three compartment floor boxes and an IP4X offering.

With its flexible manufacturing system, Tamlex can also provide bespoke products, an essential element in its drive for complete customer satisfaction.



IP4X TRUNKING



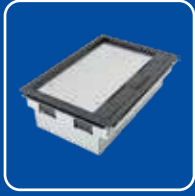
CABLE TRAY



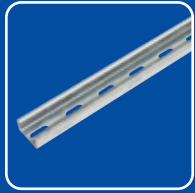
BASKET TRAY



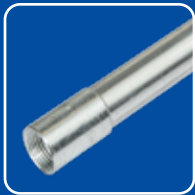
**SWITCH & SOCKET
BOXES**



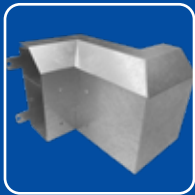
SERVICE BOXES



STRUT FRAMEWORK



STEEL CONDUIT



PRE-FAB



TAMLEX PRODUCT PROFILE

Processing over 2,000 tonnes of steel every year Tamlex have invested heavily in the latest CNC and purpose-built equipment to produce one of the most innovative ranges of steel cable management products available.

As a design orientated manufacturer, Tamlex has established many standard product ranges as well as special products to suit individual installation circumstances that incorporate features and benefits for the installer. With a highly skilled and experienced workforce Tamlex can offer the attention to detail and product quality that expected in todays construction industry.



PRE-FAB PVCu CABLE MANAGEMENT



Many jobs require those awkward fittings, special bends or bespoke assemblies that most suppliers shy away from and only want the standard business straight from the shelf. Centaur like to listen to their customers and do their best to provide special products as a service and support in an ever challenging installation market.



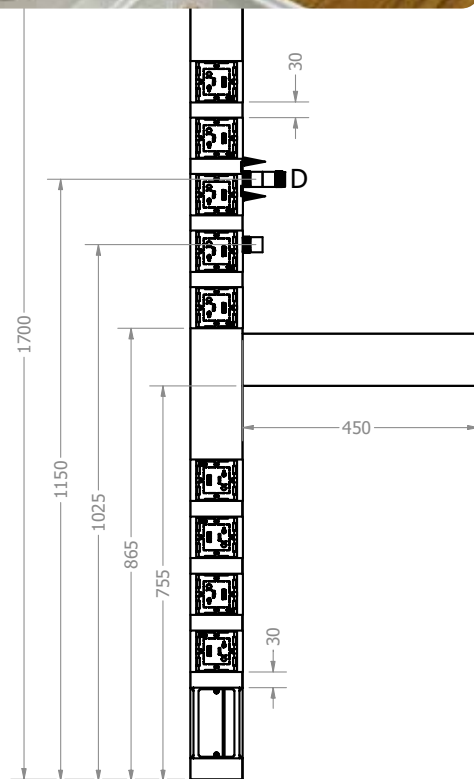
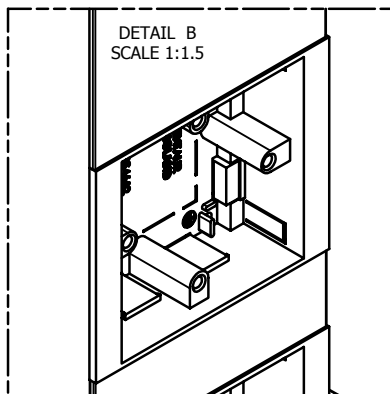
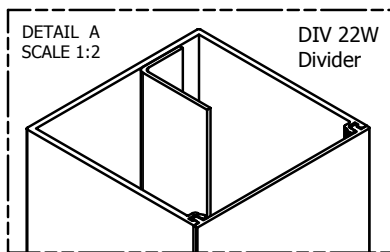
CUT TO LENGTH

All of our trunking is available cut to length & populated with outlet boxes to your specification.



PRE-WIRED

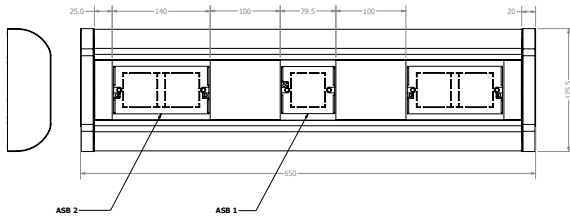
We also offer our pre-fab trunking pre-wired with accessories.





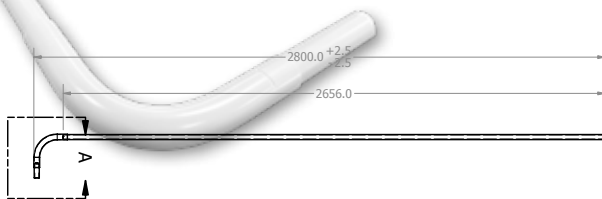
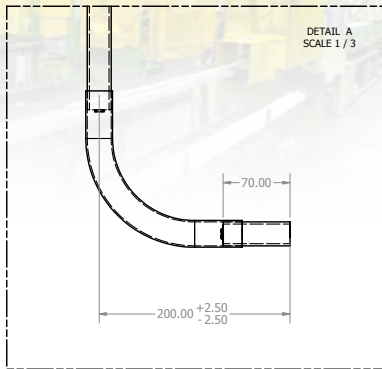
LED LIGHTING

In addition, we can also fit LED lights into our trunking, perfect for student accommodation applications.



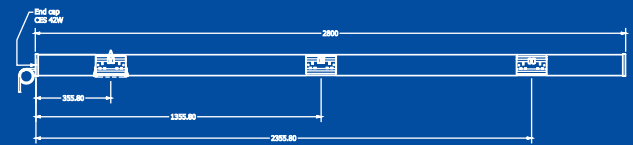
BESPOKE CONDUIT ASSEMBLIES

Conduit can be cut to length and assembled with the required accessories.

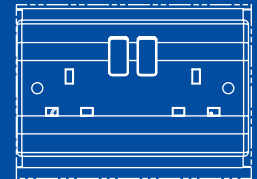


2 METRES

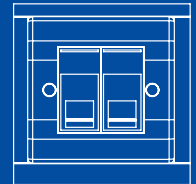
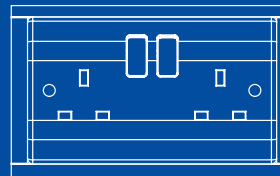
2m lengths of conduit and mini trunking, designed to improve the handling and transportation of extruded lengths.



SCALE 1 / 1.5



Campus Trunking:
2355mm length c/w 3x 2 gang sockets & 2m cable



Aluminum Dado Trunking:
3707mm length c/w 16x 2 gang sockets & 8x dual data outlets



PRE-FAB STEEL CABLE MANAGEMENT

We are a service driven business; that's what our business was built on. We aim to give our clients fantastic prices and quality whilst meeting the tight deadlines required by today's industry. We have a vital edge over our competition with our ability to turn around bespoke products quickly. This comes from our investment in technology and people, together with robust processes and efficient systems.

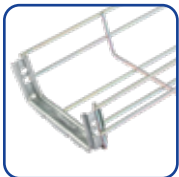
TRAPEZE SYSTEMS

This service saves contractors time and money by handling the cutting and assembly at our factory. We then deliver it direct to site.



**CUT TO SIZE,
ASSEMBLED
& DELIVERED
TO SITE**

Suitable For:

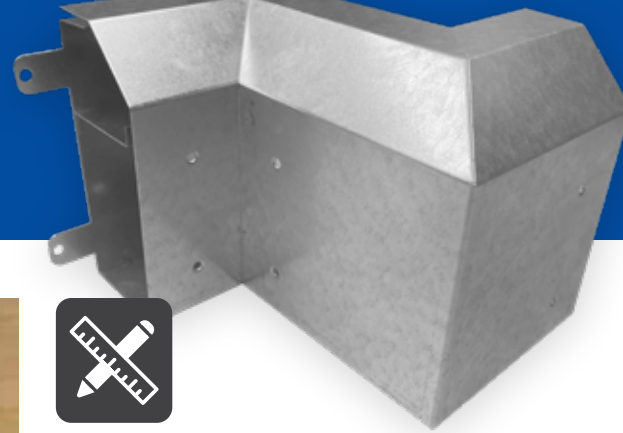


DISTRIBUTION BOARD TRUNKING

Trunking can now be manufactured to customer requirements, saving installation time and eliminating the need for cutting and waste.



CUSTOM BENDS



To match our 2-compartment skirting trunking. These bends are at angles of 65°, 78°, 26°, and 105°. Demonstrate the exceptional precision and quality of our new TruBend 3100 machines and TruBoost software

BS 7671:2018 PROTECTED ESCAPE ROUTES REGULATION: 422.2

(iv) Cable trunking and ducting systems classified as non-flame propagating accordingly BS 50085

Note 2: Ferrous metal, e.g. Steel, is deemed to be an example of a material having limited smoke production



**CAT6a
COMPLIANT**

DADO & SKIRTING

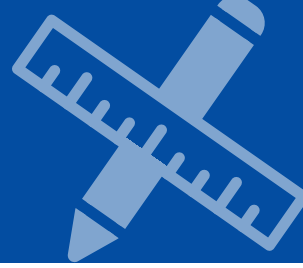
150mm & 200mm
2 OR 3 COMPS



TDA83

TSK62

CASE STUDIES



FALMOUTH UNIVERSITY

Three new blocks comprising of 125 rooms of student accommodation have been developed for Falmouth University at Packsaddle near Penryn. The university, being the second largest employer in Cornwall, has about 6,000 students with a general shortage of accommodation, so this purpose built mix of studios and cluster flats was not only most welcome but also freed up other properties in the area.

The three compartment PVCu modules were fitted with LED lighting strips to provide reading light plus power socket outlets some with the all-important USB integrated charging outlets. Each unit was protected by its own in-line RCBO.



Stratstone
quality with style



FAST CARS AND FASTCONNECT IN SOUTH WALES

The new FastConnect basket tray recently launched by Tamlex of Telford has a unique design that enables quick and easy installation and so saving precious time on site against traditional products. The patented coupler does not require screws, tools or any other fastener as it simply clips

into position and can be easily removed and repositioned if necessary.

Having been presented to Stuart Newnes, Director of Integrated Electrical Projects of Ashton-Under-Lyme it was chosen for use in a refurbishment of a luxury car dealership in Cardiff.





COLOUR OPTIONS

Has your customer ever wanted to go the extra mile with their interior design or colour match their cable management to their branding?

We can offer our products to any RAL number to suit your customers specification. This can be achieved within the raw material before extrusion or powder coated after manufacturing of PVCu or steel containment.





Tamlex

Harcourt,
Halesfield 15,
Telford,
Shropshire,
United Kingdom.
TF7 4ER.

☎ 01952 586 689

✉ sales@tamlex.co.uk

🌐 www.tamlex.co.uk



Centaur Manufacturing

Pipers Road,
Park Farm Industrial Estate,
Redditch,
Worcestershire,
United Kingdom.
B98 0HU.

☎ 01527 528049

✉ sales@centaurmfg.com

🌐 www.centaurmfg.com



Colours are reproduced as accurately as photographic and printing processes allow and may not exactly match the actual products. The manufacturer reserves the right to alter design or specification without prior notice.