

# PRISON PRODUCTS



## PRISON PRODUCT SOLUTIONS

[tamlex.co.uk](http://tamlex.co.uk)

# ADVANTAGES & APPLICATION

As a trusted British manufacturer of steel cable management products, we specialize in providing bespoke solutions for high-security environments and prison refurbishments.

Our extensive range features robust security trunking equipped with tamperproof screws, double skin call point boxes, and enhanced steel thicknesses, all designed to ensure maximum protection against tampering and damage.

What sets us apart is our commitment to bespoke manufacturing. We recognise that every project has its unique requirements. Our team is dedicated to delivering tailor-made security solutions that meet your specific needs, whether for critical high-security areas or general prison zones. With our products, you can expect unparalleled strength, durability, and reliability.



## TECHNICAL SUPPORT

- Site visits
- Field & office based sales team
- Datasheets available online
- UK based manufacturer



## DESIGN

- In-house design team
- CAD drawings available for specials
- Improves approval process
- Ensures consistency



## BESPOKE DELIVERY

- Call-off floor by floor
- Direct to site delivery
- Labels to identify goods
- Delivered in packs as per install requirements



## OFF-SITE STORAGE

- Available via national wholesale branch network
- And via customer fulfilment centres

# BESPOKE MANUFACTURING

In the modern prison environment, the complexities often demand more than off-the-shelf solutions can provide. Bespoke Manufacturing ensures that the containment systems are tailored to the unique layout and security requirements of a prison.

One of the primary benefits of bespoke steel containment is its enhanced security features. Prisons and correctional facilities must mitigate risks related to inmate safety, escape, drug use, and violence. A bespoke solution can be tailored to meet specific security requirements, including reinforced structures, anti-ligature measures, and anti-tamper features.

Our solutions can greatly enhance operational efficiency and safety, while also addressing unique challenges related to security, maintenance, and inmate welfare.

## COMPLIANCE

We pride ourselves on our proven track record in producing steel cable management solutions that align with the latest Ministry of Justice (MOJ) specifications.

We understand the importance of ensuring that our solutions meet the stringent safety standards required and allow us to deliver high-quality products that enhance security while seamlessly integrating into a prison infrastructure.

Currently supplying Prisons  
all over the country...



# IP4X STANDARD TRUNKING

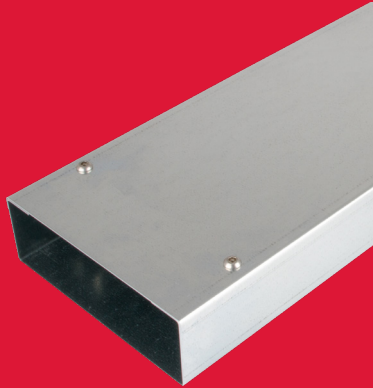
Our trunking system is designed with security and durability in mind. All our standard trunking lids are secured using turnbuckle fixings, ensuring a tight and secure fit. For additional security, tamperproof fixings can be used in conjunction with hank bushes that are secured into the return flange of the trunking body. For applications demanding heightened security, we can accommodate additional fixings, making our solution adaptable to extreme circumstances.

We can significantly enhance the system's performance by incorporating thicker steel gauges, which will provide greater physical strength. Additionally, we ensure that the trunking system achieves an IP4X rating at all joints, preventing foreign objects larger than 1.0 mm from accessing the cables inside. This robust design will greatly improve the protection and reliability of the system.

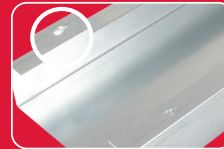


# HEAVY DUTY DADO TRUNKING

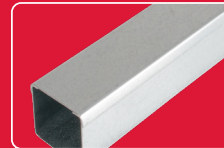
The lid design can be customised to offer different levels of security based on specific requirements. Tailor-made lids are available to create unique combinations of power and data outlets as needed. These lids can be pre-punched to eliminate the necessity for individual outlet plates, thereby ensuring a more secure system.



**TAMPERPROOF  
FIXING SCREW**



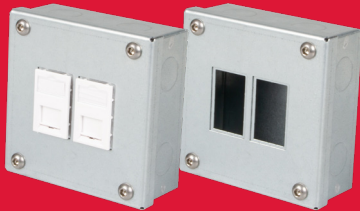
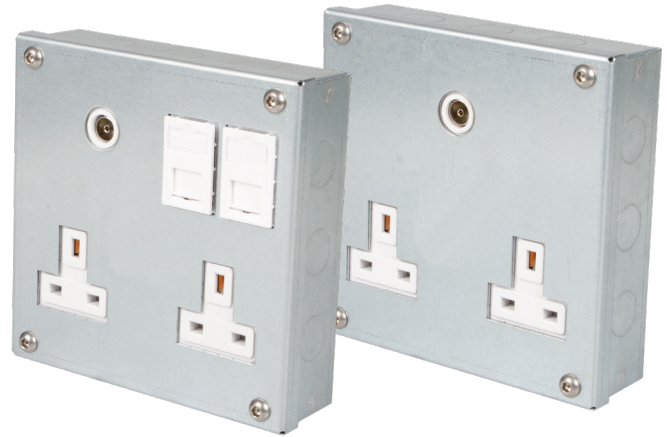
**BUILT-IN THREAD FORMS  
FOR FIXINGS**



**STEEL GAUGE  
OPTIONS**

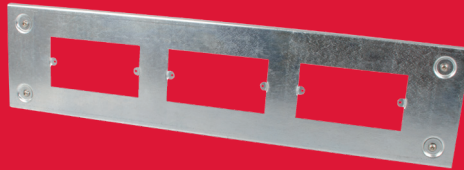
# OUTLET BOXES

- Bespoke designs tailored to customer specifications.
- Anti-ligature designs.
- Double-skinned for added strength and durability.
- Available in flush or surface-mounted options.
- Features pin hex button head security screws.
- Designed to accommodate compact or pre-existing spaces to allow for rapid installation.



## CALL POINTS

Our tamperproof power and call point modules feature a robust double skin that safeguards internal components and restricts unauthorised access.



## SURFACE MOUNTED COVERS

A range of steel covers can be manufactured to create unique combinations of power and data outlets as needed to provide a physical barrier and additional level of protection.



## SPECIAL SECURE BOXES

Customised secure boxes can be produced in any size to accommodate specific needs.

**Tamlex**  
Harcourt,  
Halesfield 15,  
Telford,  
Shropshire. TF7 4ER.

 01952 586689

 [sales@tamlex.co.uk](mailto:sales@tamlex.co.uk)

 [www.tamlex.co.uk](http://www.tamlex.co.uk)



---

Colours are reproduced as accurately as photographic and printing processes allow and may not exactly match the actual products. The manufacturer reserves the right to alter design or specification without prior notice.

**Issue 1**